



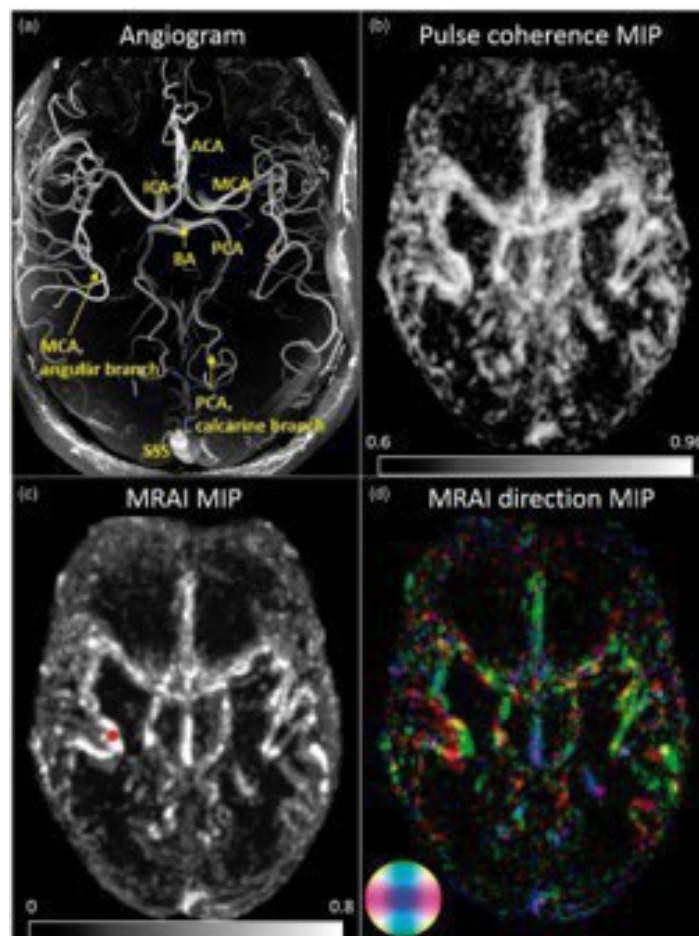
Weill Cornell Medicine Graduate School of Medical Sciences

A partnership with the Sloan Kettering Institute

Master of Science in Biomedical Imaging Program

(MBIO Program)

STUDENT HANDBOOK



Updated on September 23, 2025

TABLE OF CONTENTS

PREFACE	4
ABOUT THE INSTITUTION	5
WEILL CORNELL MEDICINE.....	5
WEILL CORNELL MEDICAL COLLEGE	5
WEILL CORNELL GRADUATE SCHOOL OF MEDICAL SCIENCES	5
MASTER OF SCIENCE OF BIOMEDICAL IMAGING PROGRAM (MBIO).....	6
MEMORIAL SLOAN-KETTERING CANCER CENTER	6
NEW YORK-PRESBYTERIAN HOSPITAL -CORNELL CAMPUS	6
GRADUATE SCHOOL LEADERSHIP AND STAFF	7
MBIOADMINISTRATIVE OFFICES /CONTACT INFORMATION	8
PROGRAM FACULTY	9
MASTER OF SCIENCE IN BIOMEDICAL IMAGING CURRICULUM	10
PROGRAM REQUIREMENTS.....	10
THESIS RESEARCH PROJECT.....	11
SPECIAL COMMITTEE	11
STUDENT GUIDANCE	11
ATTENDANCE POLICY	11
GRADING	12
UNSATISFACTORY ACADEMIC PERFORMANCE	12
COMMUNICATIONS TO STUDENTS.....	13
MBIO POLICIES AND PROCEDURES	14
RESERVED RIGHTS/CHANGES TO POLICY.....	14
STUDENT GRIEVANCE POLICY.....	14
TUITION AND FEES	15
WITHDRAWAL POLICY	15
STUDENT IDENTIFICATION CARDS.....	15
COMMUNICATIONS	15
USE OF PERSONAL LAPTOP COMPUTERS	15
ASSESSMENT	16
HOLIDAY/VACATION TIME OFF	16
JURY DUTY.....	16
RELIGIOUS OBSERVANCES	16
LEAVE OF ABSENCE POLICY	17
STUDENT RECORDS.....	17
REQUEST FOR TRANSCRIPTS.....	20
STANDARDS OF CONDUCT	21
STUDENT RESPONSIBILITIES/HONOR CODE	21
TRAINER AND LEARNER ENVIRONMENT	22
STUDENT OMBUDSPERSON	23
INSTITUTIONAL GUIDELINES: USE OF COMPUTERS, NETWORK SYSTEMS, ELECTRONIC COMMUNICATIONS.....	24
COPYRIGHT INFRINGEMENT	24
SEXUAL HARASSMENT	24
TITLE IX REGULATIONS	25
BIAS AND HATE RELATED CRIMES	27
ETHICAL CONDUCT AND COMPLIANCE HOTLINE	27
ACCESSING STUDENT SUPPORT SERVICES.....	28
STUDENT MENTAL HEALTH SUPPORT	28
HOW TO ACCESS STUDENT MENTAL HEALTH SERVICES	28
OFFICE OF ACCESS, BELONGING & STUDENT SUCCESS.....	30
MEMBERS OF THE MEDICAL COLLEGE COMMUNITY POTENTIALLY REPRESENTING A HAZARD TO THE PUBLIC OR MEDICAL COLLEGE	30
CONFIDENTIALITY	33
PROTECTION OF THE RIGHTS OF THE INDIVIDUAL	33
SUBSTANCE ABUSE POLICY	34

DRUG SCREENING	35
COUNSELING AND TREATMENT	36
STUDENT HEALTH	38
STUDENT HEALTH SERVICES.....	38
SERVICES AVAILABLE AT SHS.....	38
STUDENT HEALTH SERVICES AND ATTENDANCE	39
MEDICAL EMERGENCIES	39
IMMUNIZATIONS AND OTHER HEALTH REQUIREMENTS.....	40
MEDICAL RECORDS	41
STUDENT MENTAL HEALTH SERVICES.....	42
THE AMERICANS WITH DISABILITIES ACT (ADA).....	43
CHILDCARE	44
LIBRARIES	45
SAMUEL J.WOOD MEDICAL LIBRARY.....	45
ELECTRONIC RESOURCES.....	46
REMOTE LIBRARY ACCESS	46
NEIGHBORING LIBRARIES	46
STUDENT LIFE	48
LIFE IN NEW YORK CITY	48
HOUSING POLICY.....	48
RELIGIOUS INSTITUTIONS	48
WEILL CORNELL MEDICINE DIRECTORY.....	49
EMERGENCIES, SAFETY, AND SECURITY	50
REPORTING CRIMES, EMERGENCIES,AND SUSPICIOUS BEHAVIOR.....	50
CRIME PREVENTION TIPS	52
CAMPUS SECURITY REPORT.....	52
FIRE SAFETY	52
RESIDENTIAL FIRE SAFETY PLANS	53

PREFACE

This edition of the Student Handbook is intended to provide general guidance to students regarding the organization and policies of the University, the Medical College, the Graduate School and the MBIO Program. Although a good faith attempt has been made to provide accurate information, this Handbook does not constitute a complete or legally binding statement of rights and responsibilities. Policies and procedures, as well as instructor assignments and curriculum, are subject to change. When circumstances require assurance of completeness or validity of information, the office that is the authority on that matter should be consulted. The faculty and staff of the MBIO Program will also be pleased to assist students in such consultations.

All academic policies shall be in effect for all settings, whether instruction is provided in person, remotely, or in a hybrid fashion combining in person and remote learning. Please contact MBIO Program administration if the application of any specific policy to remote/hybrid situations remain unclear.

All information contained in this Student Handbook is subject to change. The Weill Cornell Graduate School of Medical Sciences MBIO Program staff is here to assist any student with further clarification and/or questions regarding Weill Cornell and/or the MBIO Program. Although every effort has been made to ensure the accuracy of the information presented herein, the MBIO Program is not responsible for typographical errors. Students will be notified in writing of any errors as soon as they are discovered.

University policy actively supports equality of educational opportunity. No person will be denied admission to the MBIO Program on the basis of any legally prohibited discrimination involving, but not limited to, race, color, creed, religion, national or ethnic origin, sex, sexual orientation, age, or disability. Weill Cornell is committed to the maintenance of affirmative action programs, which will assure the continuation of such equality of opportunity.

Weill Cornell Medicine

Weill Cornell Medicine (including the Weill Cornell Graduate School of Medical Sciences and Weill Cornell Medical College) provides top-quality education, outstanding patient care, and groundbreaking research. The institution is renowned for its commitment to "Care. Discover. Teach." Weill Cornell Medicine has evolved in response to contemporary challenges and opportunities, while advancing steadily in its mission to improve human health, both in New York and around the world.

Weill Cornell Medical College

Founded in 1898 and affiliated with what is now New York-Presbyterian Hospital since 1927, Weill Cornell Medical College is among the top-ranked clinical and medical research centers in the country. In addition to offering degrees in medicine, Weill Cornell also has seven PhD programs in biomedical research and education at the Weill Cornell Graduate School of Medical Sciences, and with neighboring Sloan-Kettering Institute and The Rockefeller University, has established a joint MD-PhD program for students to intensify their pursuit of Weill Cornell's triple mission of education, research, and patient care and two Tri-Institutional Doctoral Programs in Computational Biomedicine and Chemical Biology. Weill Cornell has seven Masters programs in Biomedical Imaging, Clinical & Translational Investigation, Clinical Epidemiology & Health Services Research, Computational Biology, Executive MBA/MS in Healthcare Policy and Research, Health Sciences for Physician Assistants, Population Health Sciences.

Weill Cornell Medical College is divided into 24 basic science and patient care departments that focus on the sciences underlying clinical medicine and/or encompass the study, treatment, and prevention of human diseases. In addition to its affiliation with NewYork-Presbyterian Hospital, Weill Cornell Medical College and the Weill Cornell Graduate School of Medical Sciences maintain major affiliations with Memorial Sloan-Kettering Cancer Center, The Rockefeller University, the Hospital for Special Surgery, as well as with the metropolitan-area institutions that constitute NewYork-Presbyterian Healthcare Network. Weill Cornell Medical College and the Weill Cornell Graduate School of Medical Sciences are accredited by the Liaison Committee for Medical Education of the American Medical Association and the Association of American Medical Colleges, and the Middle States Commission on Higher Education.

Weill Cornell Graduate School Of Medical Sciences

Graduate work leading to an advanced general degree has occupied a place in the Medical College since 1912, when the degree was offered through a cooperative arrangement with the Graduate School of Cornell University. While under the Medical College, the Graduate School was always subject to the rules and regulations prevailing at the University. The departments offering graduate instruction were identified in the first announcement as the "scientific departments". In June 1950, the trustees of Cornell University entered into an agreement with the Sloan-Kettering Institute for Cancer Research whereby a new division of the Medical College, named the Sloan-Kettering Division, was created for the purpose of offering additional opportunities for graduate study toward advanced degrees, thus extending the areas of the basic sciences. The expansion of the New York City component of the Graduate School prompted the faculty of the University's Graduate School to give consideration to matters of administration, with the result that, by action of the trustees in January 1952, the Graduate School of Medical Sciences was established on the Campus of the Cornell University Medical College.

The goals of the Graduate School are to train the next generation of scientific leaders in biomedical research by:

- Positioning our students to make innovative scientific discoveries
- Showing them how to work in laboratory, local and global communities of scholars, with science as a bridge across national, cultural, political, religious and ethnic identifications
- Matching them with skillful mentors who guide them to independence and support them thereafter
- Equipping them to compete in the biomedical workforce and related areas with strong skills in multi-disciplinary technologies; in the analysis, visualization and statistical evaluation of data; and in written and verbal communication

- Developing in them habits for life-long learning that grows in depth and breadth
- Inculcating in them principles of ethics, honesty and rigor in research
- Preparing them to articulate, defend and demonstrate the value of evidence-based reasoning in civic life and public policy.

Master of Science of Biomedical Imaging program (MBIO)

The MBIO program is part of the Weill Cornell Graduate School of Medical Sciences, and as such, many of the policies set forth in this document are in accordance and subject to its guidelines as well as those of Cornell University.

Memorial Sloan-Kettering Cancer Center

Memorial Sloan-Kettering Cancer Center is the world's oldest and largest privately operated center devoted to prevention, patient care, research, and education in cancer. The prototype of the National Cancer Institute-designated comprehensive cancer centers, Memorial Sloan-Kettering has two operating organizations: Memorial Hospital, which provides inpatient care, newly expanded outpatient services, an extensive array of specialized and support services, and a broad program of clinical research; and the Sloan-Kettering Institute, with some 80 laboratories dedicated to biomedical investigation.

Programs of basic and clinical research at Memorial Sloan-Kettering aim to advance the understanding of the nature and the fundamental causes of cancer, and to improve the means for prevention, diagnosis, and treatment. The close collaboration between the Center's scientists and clinicians facilitates the rapid translation of results from the laboratory to the patient's bedside.

Originally established in 1884, Memorial Hospital has been affiliated with the Medical College since 1914. Many staff members of Memorial Hospital and Sloan-Kettering Institute hold faculty appointments either in the Weill Cornell Medical College or in the Graduate School of Medical Sciences, which offers doctoral degree programs through the Sloan-Kettering Division.

New York-Presbyterian Hospital - Cornell Campus

Founded in 1771 under a charter granted by King George III of England, The New York Hospital was the first hospital in the city and the second in the country. Originally built downtown, the hospital has been located adjacent to the Medical College since 1932. A nonprofit, voluntary institution maintained by The Society of the New York Hospital, it has cared for more than five million patients since its founding. Three hospitals have merged with The New York Hospital over the years: The Lying-In Hospital, the Manhattan Maternity and Dispensary, and the New York Nursery and Child's Hospital.

The New York Hospital was the first hospital in the United States to care for the mentally ill. Today, mental and emotional illnesses are treated at the Payne Whitney Psychiatric Clinic, an integral part of The New York Hospital complex, and the Westchester Division of The New York Hospital, in White Plains, New York.

In 1927, the hospital integrated with Cornell University Medical College through the establishment of The New York Hospital-Cornell Medical Center. The agreement joined the facilities of the two institutions and provided for cooperation in the advancement of patient care, medical education, and scientific research.

Graduate School Leadership and Staff

<https://gradschool.weill.cornell.edu/team>

Dean, Weill Cornell Medicine:	Robert A. Harrington, M.D.
Dean, Weill Cornell Graduate School:	Barbara L. Hempstead, M.D., Ph.D.
Associate Dean, Academic Affairs:	Randi B. Silver, Ph.D.
Associate Dean, Program Development:	David Eliezar, Ph.D.
Assistant Dean, Student Affairs:	Judith Cukor, Ph.D.
Assistant Dean for Access, Belonging & Student Success	Yazmin Carrasco, Ph.D.
Director of Education Administration	Karla Jacome, M.S.Ed.
Director of Enrollment & Educational Programs	Heather DiTullio, M.S.
Assistant Director, Finance & Grants	Tatiana Belinskaya
Assistant Director for Access, Belonging & Student Success	Roxana Mesias, Ph.D.
Associate Director, Career and Professional Development	Aubrey DeCarlo, Ph.D.
Senior Grants Administrator	Anastasia Efthymiou, Ph.D.
Senior Manager, Training Grants	Dikaury Hernandez-Guner
Financial Coordinator	Natalia Serrano
Senior Administrative Specialist	Bouchra Hannaoui
Senior Administrative Specialist	Fernando Arzu
Senior Coordinator, Academic Operations	Katrina Pearsall, MHA
Student Services Administrator	Clive Liew
Coordinator, Office for Access, Belonging & Student Success	Rashain Adams
Operations Coordinator	Judith Farber, M.S.

MBIO Administrative Offices / Contact Information

Program Chair	email
Douglas J. Ballon	djb2001@med.cornell.edu
Program Directors	
Andrew D. Schweitzer	ans2046@med.cornell.edu
Pat B. Zanzonico	zanzonip@mskcc.org
Program Coordinator	
Sarah Schaller	sas4078@med.cornell.edu

Graduate School Office
1300 York Ave, Room A131
New York, New York 10065
(212) 746-6565
WCGS@med.cornell.edu

Program Faculty

The following faculty are proposed for the Program as thesis project mentors and/or teaching faculty. This list was developed based upon the broad range of expertise that it would offer.

WCM Radiology	MSKCC Medical Physics
Douglas Ballon PhD , Program Chair	Aditya Apte PhD
Jonathan Dyke PhD	Ouri Cohen PhD
Edward Fung PhD	Joseph Deasy PhD , Course Co-Director, ML/AI
Ajay Gupta MD	John Humm PhD
Moonsoo Jin PhD	Jason Koutcher MD PhD
James Kelly PhD	Yousef Mazaheri PhD
Sadek Nehmeh PhD , Course Director, PET/Nucs	Usman Mahmood MSc , Course Director, Xray/CT
Thanh Nguyen PhD	Saad Nadeem , PhD
Sumit Niogi MD PhD , Course Director, Health Lit	Joseph O'Donoghue PhD
Andrew Schweitzer MD , Program Director, WCM	Ricardo Otazo PhD , Course Director, MRI
Dikoma Shungu PhD	Kyung Peck, PhD
Pascale Spincemaille PhD	Harini Veeraraghavan PhD , Course Co-Director, ML/AI
James Shin MD , Course Director, Anatomy	Pat Zanzonico PhD , Program Director, MSKCC
Ching Tung PhD	
Yi Wang PhD	MSKCC Radiology
Simone Winkler PhD	Andrei Holodny MD
Gene Kim PhD	Krishna Juluru MD
Ray Razlighi PhD	Jason Lewis PhD
Wesley Zun PhD	Jan Grimm PhD
Amy Kuceyeski PhD	Kavyan Keshari PhD
Simon Dunham PhD	Thomas Reiner PhD
WCM Biochemistry	WCM Pathology
W. Clay Bracken PhD	Brian Robinson MD , Course Co-Director, Optical
Sushmita Mukherjee PhD , Course Co-Director, Opt	

Program Requirements

MBIO students are required to complete a rigorous academic program that will enable them to demonstrate a mastery of the substantive field of study.

The required courses are:

First Fall Semester (September – December)

- Physics in Nuclear Medicine (new, 4.00 credits)
- Optical and Electron Microscopy (new, 3.00 credits)
- X-ray Methods and Computed Tomography (new, 3.00 credits)
- Anatomy (new, 3.00 credits)

First Spring Semester (January - May)

- Magnetic Resonance Imaging (new, 3.00 credits)
- Machine Learning with Images (new, 3.00 credits)
- Ultrasound Imaging (new, 3.00 credits)
- Health Literacy (new, 3.00 credits)

First Summer Semester (June - August)

- Special Topics Seminar Series (new, 1.00 credits)
 - Biostatistics
 - 3D Printing
 - Imaging in Genetic Medicine
 - Nanotechnology in Imaging
 - Radiation Safety
 - Radiobiology
 - Instrument ACR Calibration
- Begin Independent Research – Laboratory Track or Clinical Track Thesis Project (8.0 credits)

Second Fall Semester (September - December)

- Independent Research – Laboratory Track or Clinical Track Thesis Project (8.0 credits)
- Responsible Conduct of Research (RCRP 9010 01, 1.00 credits)

Second Spring Semester (January - May)

- Independent Research – Laboratory Track or Clinical Track Thesis Project (8.0 credits)
- Career Development in Biomedical Imaging (new, 1.00 credits)

Second Summer Semester (June – August)

- Independent Research – Laboratory Track or Clinical Track Thesis Project (9.0 credits)

The total number of course credits offered by the Program = 28. The total number of credits including thesis work is 61. The credits awarded are based upon 1.00 credit = 750 contact minutes, the formula established by the Graduate School. Additional credits are awarded for thesis work.

The maximum number of months allowed, between first registration and completion of the program requirements, are 24 months including one fall and one spring semester dedicated to coursework (9 months), a summer seminar series plus initiation of a research or clinical thesis project (3 months), and dedicated work on the thesis project that also includes short courses on the responsible conduct of research and career development (12 months). Exceptions to this rule may occur due to special circumstances and will be determined on a case-by-case basis.

Thesis Research Project

All MBIO students must complete an MS thesis research project under the supervision of an approved Faculty member, students will pursue an independent master's thesis project focusing on a problem in Biomedical Imaging. The project will continue through the summer and second year of training to culminate in a written thesis and oral defense of the project. The process of implementing a submission of research results appropriate for publication to a peer-reviewed journal and/or national academic meeting is strongly encouraged for each student.

1. Faculty mentors may be selected among the MBIO program faculty. Other WMC/MSKCC faculty members may serve as mentors given approval from the Program Director.
2. Students must be matriculated during all phases of the thesis research project.
3. Students will be required to defend their thesis orally to their Special Committee. A successful defense is necessary for graduation from the MBIO program.
4. The thesis project will be assessed based on project milestones set by the faculty mentor that involves submission of a project proposal that will be completed by the end of the course. Students will prepare documents outlining the research question and the research strategy that will be assessed by the thesis mentor at the weekly meetings. The proposal and evidence of feasibility (e.g., bibliography of the subject matter, source of data, statistical tools available, etc.) must be approved by the program Chair, Program Directors and faculty mentor by the end of the course.
5. The thesis project will be assessed based on the progress noted by the thesis mentor at the weekly meetings between mentor and student, in this case related to progress toward producing a final thesis document that will be submitted and presented at the end of Year 2. The first draft of the written thesis document in outline form will be evaluated by the thesis mentor using a format similar to that adopted by the National Institute of Health Study section members.

Special Committee

The thesis project will be assessed based on completion of the research project and approval of the final written dissertation an oral defense of the thesis. Students need to complete two milestone: Final Written Dissertation and Oral Presentation.

- Final Written Dissertation: Due date determined by Faculty mentor and Program Director, but no later than four weeks prior to the end of the course in order to allow for review and approval by the thesis committee.
- Oral Presentation: Scheduled for the penultimate week of the course. The presentation is open to the public and attended by the thesis committee, Program Directors and Program Chair. This is the final formal requirement for the Master's program, and if approved by the Committee and Program leadership, will result in conferral of the Master's Degree in Biomedical Imaging.

Student Guidance

The thesis project consist of weekly consultation with the project mentor and students are expected to spend a minimum of 22.5 hours per week of independent work over 16 weeks. Students are expected to be prepared to meet deadlines set out with their thesis mentor and be prepared for active discussion on their project.

Attendance Policy

For each course, the course director will inform the students of the attendance policy in the course syllabus. Unless

specified otherwise, attendance at all course activities, including lectures, is mandatory.

A request to be excused from a scheduled class or activity is to be sought by the student in writing (e-mail). When a student does not attend a required session and has not provided in advance an appropriate request for permission or explanation of the absence, the student is in violation of the standards of conduct required for students. Planned absences without proper notification are considered “unexcused absences”. Such absences may result in sanctions that may include, but are not limited to, receiving a zero grade for the activity missed, receiving a marginal grade in the course, or if serious, receiving a failing grade in the course.

Grading

Individual course syllabi should be consulted for the level of performance required for successful completion of that course. Successful completion of a course includes but is not limited to course work, maintaining professionalism, attendance, punctuality and other criteria as stated in each course syllabus.

Letter grades (A-F) will be recorded on the student’s final transcript. The grade of Satisfactory(SX) or Unsatisfactory (UX) is used for specific courses as identified by the course coordinator.

In addition, the interim grade “Incomplete” may be assigned to any course in which the performance is otherwise satisfactory, but the student has not completed a component or activity that the course director has agreed that the student may complete at a subsequent agreed upon date. If the student does not complete the activities by the specified date, the grade of “Incomplete” will become a “Fail” and the policies for failed courses will apply.

Letter grades (A-F) will be recorded on the student’s final transcript. A C– is the minimum passing grade. The grade of Pass (P) or Fail (F) is used for specific courses as identified by the course director.

Students may seek clarification about a grade for an examination, performance-based assessment, or a final course grade that does not seem consistent with the student’s view of their performance. If the student believes that there is a credible basis to assert that the grade received does not reflect their objective course performance, the student should seek the guidance of the course director. The student may appeal the decision to the Associate Dean of Academic Affairs (further details on the grade appeal process are provided in the [Code of Legislation](#)).

Remedial work, re-examination or repetition of a course are not to be regarded as a right for a student who has an unsatisfactory record in a course but are options which may be offered to individual students, in the judgment of the MBIO Program faculty, based on the student’s academic record and consideration of circumstances related to the completion of the course.

When a student is having academic difficulty with a course(s) (or their overall academic performance) it is the responsibility of the student to seek advice from the Program Director. Early intervention with academic difficulties may provide a wider range of solutions and is in the student’s best interest.

Unsatisfactory Academic Performance

Academic progress is reviewed at the end of every semester. If a student exhibits unsatisfactory academic performance as determined by the program leadership, then the student will receive notification in writing from the Program Director with an appropriate action, among those described below:

1. The student is issued a **Warning**. This means the student's performance does not meet expectations. Unless improvement is shown in the subsequent term, the student may be placed on **Academic Probation**.
2. **Academic Probation** indicates that a student's record is unsatisfactory. Students can be placed on **Academic Probation** if they
 - a. fail a class, or
 - b. receive 2 grades of C or lower in one term, or
 - c. do not improve after being issued a **Warning**.Failure after one warning and one academic probation period may be grounds for a **Required Withdrawal**.
3. **Required Withdrawal** indicates that a student has been dismissed from the program; they may not continue studies or attend classes in the program.
4. **Students need to be in good academic standing to maintain their scholarships.**
5. **In addition, the student is in good standing unless they violate university policies including but not limited to the terms of the [WCGS Code of Legislation](#).**

For those students receiving financial aid, the notification of unsatisfactory academic performance will include a financial aid warning for the subsequent payment term. Students on probation are ineligible for subsequent financial aid payments. However, a student may be offered an individual academic plan to reestablish satisfactory progress and is permitted to receive financial aid for an additional payment term.

Communications to Students

To keep apprised of schedule changes, room assignments, exam information, and other course announcements, it is very important that students check their Cornell e-mail daily.

Reserved Rights/Changes to Policy

The MBIO Program, Graduate School and Medical College reserve the right to determine whether existing policies and procedures address a particular situation, or whether circumstances are of such magnitude to require additional actions. It is recognized that the faculty at large reserves the authority to intervene in the application of these standards and procedures, although it is not anticipated that the Faculty will exercise this inherent authority unless the Faculty determines that existing policies and procedures do not address the situation.

Student Grievance Policy

It is a principle of the MBIO Program that the standards outlined above will be maintained within the Program in order to foster academic excellence and professional integrity. To achieve this, the students must know the expectations and standards of the MBIO Program, understand how these will be applied and be familiar with the grievance process.

The grievance process should be applied as follows:

Informal Procedure:

1. Any individual student may approach any member of the Program administration for individual guidance or for a personal concern.
2. Students may seek advice from the Program Director about unresolved matters or responses that the student considers unsatisfactory.

Formal Procedure:

The Program will invoke formal procedures to address unresolved matters and, in those circumstances, where an informal process is not realistic. The formal process is as follows:

1. The student should draft a letter describing in detail the student's grievance addressed to the Program Director. The student should explain what occurred, when it occurred, and how it affected them. In the letter the student must provide as much information as possible with supporting documentation. Students should be sure to indicate what resolution he/she may be seeking as a remedy.
2. In consultation with the faculty involved, the Program Director has discretion to request documents and relevant information that would be needed to conduct a full and fair assessment of the situation.
3. After investigating the complaint, the Program Director will respond to this letter with a formal written resolution in a timely manner.
3. Should the situation go unresolved, further advice may be sought by the student from the Associate Dean of Academic Affairs or the Dean of the Graduate School of Medical Sciences.

No set policies or procedures can anticipate every issue or situation and circumstances at times require alternations and/or adaptations. While maintaining a program commitment to these policies and applying them fairly, the Weill Cornell Graduate School for Medical Sciences, MBIO Program does, however, reserve the right to modify policies and/or procedures at times as it may deem necessary.

Tuition and Fees

For a student to remain in good financial standing, all tuition and fees must be paid in full by the due date.

Any individual who owes money to the University and/or has not returned any of the following items: I.D's., program equipment, library books, education center access card, will not be allowed to register or re-register in the University, have his or her academic credits certified, be granted a leave of absence, apply for or retain student housing, receive their certificate of completion or degree.

Four weeks prior to graduation:

- 1) All outstanding fees owed to the University must be paid by paper check or money order.
- 2) All requests for reimbursement must be submitted.

All students must make appropriate arrangements for settlement of all financial obligations to Weill Cornell.

Withdrawal Policy

Any student who chooses to withdraw from the MPIO Program must meet with the Associate Dean for Academic Affairs and submit a program withdrawal form to the Program Director and to the Associate Dean for Academic Affairs.

Student Identification Cards

During orientation, the MPIO Program Office will facilitate the issuing of identification (ID) cards: an I.D. for the Weill Cornell Medicine campus. The Security Department for Weill Cornell Medicine is located opposite the Starr Building entrance. Student must have this I.D. Card with them at all times.

Lost cards must immediately be reported as follows: to the Security Department on the main campus at (212) 746-0911.

Communications

It is the student's responsibility to keep contact information current in the Graduate School files. This includes: name changes, address, all telephone numbers, emergency contacts, etc.

Students will be issued a Weill Cornell e-mail account. This is the only acceptable format for exchange of electronic information between the student and the Program.

Use of Personal Laptop Computers

When a student wishes to use their own laptop computer for any purpose requiring regular access to the Weill Cornell Medicine network, the device must be compliant with published minimum requirements and must be "tagged". The Office of Information Technologies and Services (ITS) will be "tagging" and performing mandatory encryption. These steps will permit students to securely and wirelessly connect to the Weill Cornell Medical College (WCMC) Network.

For policies regarding supported computers and other devices, visit the ITS website at:
<https://its.weill.cornell.edu/policies/devices-supported-computers-policy>

For additional information on networking policies for computers, please visit here:
<https://its.weill.cornell.edu/policies/network-policy>

Once enrolled, students are eligible for software discounts including Microsoft products (such as Microsoft Office) at:
<https://its.weill.cornell.edu/guides/how-to-download-personal-software-from-onthehub>

Assessment

In the M BIO Program's continuing efforts to maintain quality education our program utilizes many assessment tools. Course/Instructor/ Evaluations: Students are required to complete an online evaluation of the course and instructors at the conclusion of each course.

Holiday/Vacation Time off

The following holidays are recognized by Weill Cornell Medicine: New Year's Day, Martin Luther King, Jr. Holiday, Presidents' Day, Memorial Day, Juneteenth, Independence Day, Labor Day, Thanksgiving Holiday (Thanksgiving Day and the following day), and Christmas Day.

Jury Duty

New York State has rigorous regulations regarding service on juries and does not allow students to be excused from jury duty.

A student who receives a jury duty notice from New York County and cannot make the dates assigned because they are scheduled for a class, rotations, or elective, should call the number provided on the jury notice, explain that you are a student, and offer another two-week period during which you would be able to serve. The student may be asked to go to the court clerk to discuss your situation in person. There is no guarantee that students will be allowed to postpone jury service, but one's willingness to make oneself available during the next break or vacation may aid the request. Students who repeatedly postpone jury service, eventually will be required to serve, regardless of their academic schedule.

Religious Observances

Weill Cornell recognizes that the members of its community, including students, observe a variety of religious faiths and practices. Few of the various religious days of observance are part of Weill Cornell's holiday calendar. However, the M BIO Program recognizes and respects the religious beliefs and practices of its students and seeks to accommodate them reasonably within the requirements of the academic schedule. As a result, Weill Cornell will not penalize a student who must be absent from a class, examination, study or work requirement for religious observance. Students who anticipate being absent because of religious observance must request permission for the absence from the Program, course director, or research mentor. These requests should be made as early as possible in advance of an anticipated absence of a day, days or portion of a day. In all cases, students should make arrangements to make up all missed days and assignments.

Whenever feasible, M BIO Program faculty will avoid scheduling examinations and assignment deadlines on religious holidays. A student absent from a class because of religious observance shall not be penalized for any class, examination, or assignment deadline missed on that day or days.

In the event an examination or assignment deadline is scheduled on a day of religious observance, a student unable to attend class shall be permitted the opportunity to make up an examination or to extend any assignment deadline missed.

No adverse or prejudicial effect shall result to any student who takes advantage of the provisions of this policy. If a student believes that they are not being granted the full benefits of the policy the student may confer with the Program Director. In the event a student continues to believe that they are not receiving the benefits of this policy, the student may file an appeal under the appeal provision of the grievance policy.

Finals Week – in the event that a religious holiday falls during finals week, students are advised to speak with the Course Director as soon as possible to make alternative arrangements. All final examinations must be completed prior to the start of subsequent semester.

Leave Of Absence Policy

A Leave of Absence (LOA) is an approved specified period of time in which a student is excused from curricular activities and may return without reapplication to the MBO Program. A student may request and be granted a LOA from the Associate Dean of Academic Affairs. The LOA form must be approved by the program and Associate Dean prior to granting the LOA.

Students who do not return to full-time status at the end of an approved leave, and who have not applied for and been approved for extension of their leave of absence status, will be considered to have withdrawn from the MBO Program.

Medical Leave of Absence

A medical leave of absence is granted by the Program Director upon the recommendation of the student's treating physician and/or an administrative physician consultant appointed by the MBO Program. The purpose of the medical leave is to enable students to seek treatment for a health-related condition that interferes with the student's ability to undertake the curriculum or that poses a threat to the health and safety of the student or others. The term of the leave is for a period of time based upon the recommendation of the treating physician and/or administrative physician consultant. The leave may be extended based upon the recommendation of the treating physician and/or an administrative physician consultant. To apply for a medical leave, a student must meet with the Associate Dean who can provide the student with the name of an administrative physician consultant as needed.

Personal Leave of Absence

The Associate Dean of Academic Affairs grants a personal leave of absence. A personal leave enables a student to take time off, in extenuating circumstances, to address issues of a personal nature, including those related to the health and well-being of a family member or partner.

Return to Studies from Leaves of Absence

At the time a leave of absence is granted, the Associate Dean of Academic Affairs determines the length of the leave and the conditions, if any, for a return from the leave of absence. All conditions for return must be complied with. Extensions of a leave of absence are not automatic, even if within the time frame permitted for the category of leave.

A student who determines that they will not be returning at the time scheduled for a leave to end should consult with the Associate Dean of Academic Affairs as early as possible before the scheduled return date. This will enable a student to learn whether or not an extension of the leave of absence can be granted, or if the student needs to make other arrangements.

If a student does not return from a leave at the conclusion of the set time period, and has not received an extension in writing, the individual will be deemed to have withdrawn from the Program. Similarly, if a student has not satisfied the criteria to return, if any, and has not received an extension in writing, they will be deemed to have withdrawn. No further action will be necessary to finalize the withdrawal.

Student Records

It is the policy of the Medical College to protect information contained in student records from unauthorized disclosure and to comply with the provisions of the Family Education Rights and Privacy Act of 1974 (FERPA) and regulations thereunder. The policy extends to students the right to inspect and review their education records and provides students the right to request that their record be amended if the student believes that the record contains inaccurate or misleading information or if it violates the student's privacy rights. If a student believes the Medical College has failed to comply with the requirements of FERPA, a student may file a complaint with the United States Department of Education. The full Cornell University Policy on Access to Student Information can be found at http://www.dfa.cornell.edu/cms/treasurer/policyoffice/policies/volumes/governance/upload/vol4_5.pdf.

A. Releasing Education Records

Education records may be released in person or in writing to an inquirer, and only with the written and signed consent of the student, except when FERPA authorizes disclosure without consent as indicated below.

1. Directory Information

The following information about each student is considered public directory information and may be released or disclosed without a student's consent. However, a student may elect to have his/her directory information withheld by completing Information Non-Disclosure Statement and submitting it to the Weill Cornell. The Non-Disclosure form must be on file with the Program office within ten days of the start of the Program.

Name
Date and place of birth
The most recent previous educational institution attended
Major fields of study
Degrees and awards received
Honor society memberships
Extracurricular activities
Dates of attendance
Local address and telephone number

Weill Cornell Medicine, including Weill Cornell Medical College, Weill Cornell Graduate School of Medical Sciences, and the MSHS Physician Assistant Program, reserves the right to release such directory information as evaluated on a case-by-case basis.

2. Personally Identifiable Information

The following information is considered personal information of each student and will not be released or disclosed except with a student's signed, written consent, or as provided herein:

Grades and academic standing
Evaluations
Financial aid information
Undergraduate record and scores on standardized tests (MCAT, GRE, others)
Social Security number

3. Personally Identifiable information may be disclosed without consent:

- to students who request an opportunity to inspect their education records;
- to members of the faculty and other Weill Cornell officials with legitimate need to know;
- to institutions at which a student seeks to enroll;
- to specific federal and state officials, as provided by law;
- in connection with a student's application for, or receipt of financial aid;
- to organizations conducting studies for, or on behalf of, educational institutions or agencies, for the purpose of developing, validating, or administering predictive tests, administering student aid programs and improving instruction, if such studies are conducted in a manner which will not permit personal identification of students or their parents by persons outside the organization doing the study and such information will be destroyed when no longer needed for the purpose for which it is conducted;
- to courts, government agencies, and others in compliance with a judicial order or lawfully issued subpoena, provided that an effort is made to inform the student by telephone or mail before complying with the subpoena or order;
- to accrediting organizations in order to carry out their accrediting function; and
- to the parents of a dependent student as defined in the Internal Revenue Code.
- to appropriate parties in a health or safety emergency if knowledge of this information is necessary to protect the health and safety of the student or other individuals.

4. Anyone who releases education records must maintain the name of the party making the request, any additional party to whom it may be re-released, and the legitimate interest the party had in requesting or obtaining the information. A student may inspect this record of requests.

B. Permitting Students to Inspect and Review Education Records

A student may inspect and review his or her education records after making a written request. The Medical College may refuse to permit a student to inspect the following education records:

- Records of instructional, supervisory, and administrative personnel which are in the sole possession of the maker and are not accessible or revealed to any other person except a temporary substitute.
- Financial records of a student's parents
- Medical and counseling records available only to those participating in the student's treatment.
- Letters of recommendation placed in the student's education record prior to January 1, 1975 or with respect to which a student has waived right of access.
- Education Records connected with an application to attend the Medical School if that application was denied, or the applicant never attended the Medical School.

Such privileged information will not be disclosed to students, except that with respect to medical records, a student may have a physician or other appropriate professional review the record.

Faculty and staff members are deemed to have a legitimate need for privileged information contained in a student's education record when such information is required: (1) for purposes of evaluations or recommendations; (2) for purposes of any internal or external action or proceedings affecting the student or the institution with respect to the student, including proceedings to amend or correct an education record. Custodians of the records and members of their immediate staffs have right of access at all times.

Faculty and staff members are defined as all members of the Medical College Faculty, the executive and administrative officers of the University and the Medical College, including from the Office of University Counsel, and members of their professional staffs, and outside professionals working on a matter with any of the named categories of Medical College employees.

Process for Inspecting Records and Amendment of Records

A request by a student to review and inspect the records and information relating directly to them shall be in writing, addressed to the custodian of records, signed by the student and thereafter retained in the record folder. Requests for inspection will be honored as soon as practicable, but in no event later than forty-five (45) days from the date of receipt of the request.

A student may inspect records only in the presence of a designated administrator. Students may obtain copies of material in their education record, other than the transcript and permanent record card, by paying a per page fee. All such copies shall bear a conspicuous legend that the copy is not an official document. Transcripts and record cards may not be copied because of the possibility of misuse.

A student may request that his or her record be amended on the grounds that the information contained therein is inaccurate, misleading, inappropriate, or in violation of his or her right of privacy. Such custodian must decide whether to amend the record as required within a reasonable amount of time. If the custodian or maker of the record refuses to make the requested change, then, such custodian shall inform the student of the decision and of the student's right to a hearing. Upon request of the student, the Program Director will promptly appoint a member of the faculty or administrative staff not having a direct interest in the matter to investigate the matter and hold a hearing. Any such hearing will be held upon five (5) days written notice to the student and those persons called to testify; and, will afford the student a full opportunity to present evidence relevant to the issues. A student, at his or her own expense, may be accompanied or represented by an attorney or an advisor.

After conclusion of the investigation and hearing, the faculty or staff member conducting the same shall submit a written report and recommendation to the Program Director, based solely on the evidence presented. The Program Director will thereafter notify the student in writing as to whether or not the record will be amended. If the record is not to be amended, the student shall have the opportunity to place in the record a written statement commenting on the information, which was sought to be corrected, and/or setting forth reasons for disagreeing with the decision not

to correct the file. If the record is to be amended, the Program Director shall instruct that the record be amended accordingly and inform the student of the amendment in writing.

C. Custody and Location of Records

Student education records are maintained in the following offices and requests for inspection should be addressed to those offices:

General records - including disciplinary records, are maintained in the office of the Associate Dean of Academic Affairs or with the Registrar.

Departmental records - maintained in the Office of the Associate Dean (Weill Cornell Graduate School of Medical Science) or the Program Director.

Financial records - maintained in the Office of Student Accounting or the Program.

Request for Transcripts

Any student or graduate may request (in writing) that a transcript of his/her record be mailed to educational or other recognized institutions as credentials in support of an application for a position or promotion. All transcripts are marked "confidential" and carry the instruction that they are not to be turned over to the candidate. This rule exists to avoid possible loss and fraudulent use of an official document of Weill Cornell. Students or alumni may send their requests to Weill Cornell Graduate School of Medical Sciences, Office of the Registrar at:

<https://studentservices.weill.cornell.edu/credentialing-information>.

STANDARDS OF CONDUCT

The Graduate School requires that faculty, students, and staff abide by fundamental standards of conduct expected of the members of the graduate and medical college community in their interactions with each other. Membership in the Graduate School community for students is more than an academic commitment; it connotes a willingness by the student to act as a responsible professional. Inherent in the concept of a scientific professional is an underlying integrity and ethical foundation that defines the tone and culture of the trainer-learner environment at the Graduate School.

The Graduate School's standards of conduct also enable students to begin to encounter and wrestle with the difficult moral and ethical questions that arise continuously throughout one's professional career. In this capacity the standards of conduct promote expected behaviors, challenge unprofessional behaviors, and educate students, as well as faculty, to confront these challenges.

It shall be the responsibility of the students of the Graduate School to uphold the integrity and ethical standards of the community to the fullest extent possible. The standards of conduct listed below set forth general responsibilities of students. The full range of responsible conduct cannot be set forth in any policy document. Accordingly, students should view these enumerated responsibilities as an illustration and should strive to comply with both the letter and the spirit of these standards of conduct.

This section also describes the guidelines and policies that will apply when there has been a failure to comply with the standards.

Student Responsibilities/Honor Code

In order for students to be permitted to continue their studies at the Graduate School, students must demonstrate a range of skills and abilities, such as professionalism, maturity, good judgment, a sense of responsibility and morality, the ability to synthesize and apply knowledge, and evidence that they are capable of becoming effective scientists. Students must take responsibility for their own behavior, work effectively with others and maintain high quality work standards, honesty, and integrity, including specifically the integrity of the content of the academic work they perform and produce, including examinations, publications, reports and oral presentations.

Students must demonstrate professionalism. Weill Cornell defines professionalism as competency in the following domains: responsibility, self-improvement, relationships with research teams, and integrity in research conduct and dissemination.

1. Responsibility, integrity and ethics
 - Attendance at required classes
 - Reliable, timely performance of educational and research responsibilities
 - Accurate, honest reporting of information
 - Personal comportment: hygiene and conduct
2. Self-Improvement
 - Accepting constructive criticism
 - Modifying behaviors appropriately
3. Relationships with colleagues, research teams and systems
 - Respect for and cooperation with all colleagues
 - Appropriate use of medical college and institutional resources
4. Accountability, responsible for ethical, honest, reliable, diligent, honorable, and virtuous actions towards others and reflecting core values of the institutions to foster inclusion and belonging

Any conduct unbecoming of a student at the Graduate School, including and not limited to the following bullet points, which are examples of conduct that are not suitable for students at the Graduate School:

- knowingly or carelessly representing the work of others as one's own.

- using or giving unauthorized assistance in any academic work.
- restricting the use of material used to study in a manner prejudicial to the interest of other students.
- purposely misleading or give false information, including falsifying or fabricating information or data.
- cheating or otherwise committing a breach of academic and/or professional integrity.
- repetitively or egregiously failing to fulfill professional requirements and responsibilities.
- committing an act of physical abuse or violence of any kind.
- sexual or other prohibited forms of harassment.
- sharing confidential, inappropriate, unauthorized or copyrighted information (including but not limited to photos, images, text or video) on the internet or any form of electronic media
- repetitively or egregiously failing to fulfill professional requirements and responsibilities of a laboratory rotation or role
- committing an act of physical abuse or violence of any kind, or use of threats of violence of any kind
- disorderly and/or obscene conduct on campus or its affiliates.
- bullying (including but not limited to verbal, physical force or the use of electronic technology) which deliberately seeks to harm or humiliate another student, faculty, lecturer, or administrative staff.
- obstructing, harassing or interfering with teaching or program administration; including the use of information and communication technologies as a means of intimidation, harassment or unwarranted interruption.
- inappropriate use of institutional resources in a non-inclusive manner or for non-student related purposes. Specifically, student organizations and groups cannot use an individual's protected status as the basis to exclude them from group activities (i.e., age, race, ethnicity, creed, color, national origin (including shared ancestry), sexual orientation, military status, political affiliation, sex, gender identity or expression, disability, predisposing genetic characteristics, familial status, marital status or other protected status), except as permitted by Graduate School or university policy in accordance with federal law
- unauthorized entry to or use of Weill Cornell or its affiliates.
- theft of or negligent damage to Weill Cornell or its affiliates.
- being repeatedly absent, unexcused, from a required course, or laboratory activities; or
- failing to respond in a timely way to communications (phone calls, emails or other correspondence) from the administration, faculty, course leadership or their representatives
- failure to comply to with any lawful directive of a university or WCM official within the scope of that person's duties or employment or any policy or rule that has been duly promulgated by the university, WCM, or the Graduate School thereof.

A student, or group of students, knowing of any situation in which a violation of any of the standards of conduct set forth above may have occurred is responsible for providing any such information in writing to the Dean of the Graduate School. Faculty are similarly required to report a violation to the Dean of the Graduate School. Students and faculty may also inform the Trainer Learner Committee, the Office of Civil Rights and Investigations, the Student Ombudsperson, the Program Director or Program Chair, or the anonymous Cornell hotline. Each student shall be bound by standards of conduct described above and shall be presumed to be familiar with the above provisions.

Trainer and Learner Environment

The Graduate School is committed to providing an environment that fosters mutual respect and the values of professionalism, ethics, and humanism in the practice of biomedical research and its application to medicine. The Graduate School has a policy of zero tolerance for mistreatment of its students, faculty, staff and guests. An environment conducive to learning requires that faculty, students and all administrative and support staff treat each other with civility, respecting each individual's views and background. Faculty, other trainees, administrators and staff must treat students fairly and respectfully in all settings where students are educated and are expected to create and maintain an academic environment conducive to the pursuit of free inquiry, academic integrity, and the respectful interchange of diverse ideas and differing viewpoints. These standards of conduct are intended to prohibit teaching and training behaviors and other practices that are discriminatory or that may undermine professionalism. The body charged with monitoring, reviewing, investigating and aiding in the resolution of mistreatment issues is the Trainer-Learner Committee (TLC). The Graduate School has a TLC; <https://gradschool.weill.cornell.edu/WCGSTLC>.

Students wishing to report a violation, ask a question, or seek advice may contact the TLC by emailing (WCGSTLC@med.cornell.edu). When emailing the TLC, students may, if desired, request follow-up from a specific member of the TLC. Students need not provide extensive detail regarding mistreatment or potential mistreatment in the initial contact. A member of the TLC will reach out to set up a meeting, phone call or continue the conversation via email. More information on the TLC can be found online at: <https://gradschool.weill.cornell.edu/WCGSTLC>

[Positive Learning Environment & Student Mistreatment Policy](#)

Examples of conduct that is *not* appropriate include:

- verbally abusing a student, including belittling and/or humiliating a student, or speaking disparagingly about a student's economic or cultural background, gender, sexual orientation or preference, race or religion;
- exploiting students in any manner, including requesting that students perform personal errands where performing the procedures interferes with a student's attendance at educational activities or performing research;
- intentionally singling out a student for arbitrary or selective treatment;
- pressuring a student to perform laboratory procedures for which they are insufficiently trained;
- interfering with a student's need to attend properly to a potentially serious health problem, including to seek attention for a needle stick injury; or attend a doctor's appointment;
- committing an act of physical abuse or violence of any kind.

Faculty shall educate and advise students about the specific standards that govern professional conduct in a rotation, a course or in a laboratory setting, and, by his or her own conduct, set an example of the standards expected of the student.

If a student believes that a faculty member has violated the standards of conduct, the student may file a request for an investigation with the TLC. Faculty members are also required to inform the Program Director and Associate Dean, in writing, of any alleged violation by a faculty member of the standards of conduct outlined above. Faculty members, upon appointment to the Faculty, shall be bound by the standards of conduct set forth in this section and shall be presumed to be familiar with its provision.

Student Ombudsperson

The Student Ombudsperson Office offers a safe place where all students at Weill Cornell Medical College and Graduate School of Medical Sciences may discuss problems or issues. Concerns about situations that interfere with work, study or student life may involve a classmate, advisor, or instructor. Issues may be academic related, interpersonal conflicts, and harassment. The Ombudsperson does not take a side in disputes. The Ombudsperson treats all inquiries as confidential, as described in our Ethical Principles below. We assist students in several ways:

- Listening and discussing concerns, questions, and complaints
- Provide information on Weill Cornell Medical College policies and practices
- Provide information on how to make Weill Cornell aware of a particular problem
- Discuss and assist the student in evaluating available options
- Refer the student to the proper authority to resolve the situation
- Assist students to devise ways in which they might resolve problems with others on their own.
- While maintaining confidentiality, provide feedback to the administration (or others in authority) when a systemic issue or trend occurs

The Ombudsperson assists students in a variety of ways consistent with the WCM mission. Overall, the Ombudsperson is an advocate for fairness and equity.

The Student Ombudsperson, Dr. Henry Murray, can be reached at 212-746-6330 and hwmurray@med.cornell.edu. For more information about the Student Ombudsperson's role visit <http://studentservices.weill.cornell.edu/student-life/student-ombudsperson>.

Institutional Guidelines for Use of Computers, Network Systems and Electronic Communications

The Medical College's computers, network systems equipment, data, and software are a critical portion of the Medical College's infrastructure and are to be treated accordingly.

Students and faculty are responsible for their actions when using the Medical College's computers, electronic communications and network systems, whether or not their transgressions are intentional, accidental and/or can be corrected.

Users of Weill Cornell Medicine computers, tablets, and network systems shall respect:

- the privacy of other users' information, whether or not the information is securely protected;
- the ownership and intellectual property rights of proprietary and commercial software, including not using unauthorized copies of software even where the software may not be copy protected;
- the finite capacity of a computer system and limitations of use so as not to interfere unreasonably with the activity of other users;
- procedures (posted in computer facilities and/or online) established to manage use of the computer system;
- the rights of others not to be harassed, intimidated, or otherwise receive intrusive or inflammatory information through the computer system; and
- the Medical College's policies regarding the use of computers as specified by the Information Technologies and Services (ITS) at <https://its.weill.cornell.edu/policies>.

Copyright Infringement

Copyright infringement is the act of exercising, without permission or legal authority, one or more of the exclusive rights granted to the copyright owner under section 106 of the Copyright Act (Title 17 of the United States Code). These rights include the right to reproduce or distribute a copyrighted work. In the file-sharing context, downloading or uploading substantial parts of a copyrighted work without authority, including unauthorized peer-to-peer file sharing, constitutes an infringement, and may subject students to civil and criminal penalties.

In general, anyone found liable for civil copyright infringement may be ordered to pay either actual damages or "statutory" damages affixed at not less than \$750 and not more than \$30,000 per work infringed. For "willful" infringement, a court may award up to \$150,000 per work infringed. A court can, in its discretion, also assess costs and attorneys' fees. For details, see Title 17, United States Code, Sections 504 and 505. Willful copyright infringement can also result in criminal penalties, including imprisonment of up to five years and fines of up to \$250,000 per offense.

At Weill Cornell Medicine, the unauthorized distribution of copyrighted materials is also a violation of the standards of conduct, and may result in disciplinary action up to and including expulsion. Students are advised that this restriction pertains to any and all lecture materials including printed handouts, electronic media such as PowerPoint presentations, and any audio/video recordings of lectures or laboratories. These are the intellectual property of the author and/or Weill Cornell Medicine and shall not be distributed in any form to any other recipients. Failure to respect intellectual property rights as defined herein may jeopardize a student's good academic standing in the Program and may result in disciplinary action.

For additional information on the Copyright Infringement Policy, please visit <https://its.weill.cornell.edu/policies/1107-copyright-infringement-policy>.

Sexual Harassment

The Human Resources Department and the Office of Civil Rights and Investigations: <https://civilrights.weill.cornell.edu> are available to assist all members of the Medical College community with sexual harassment problems or questions. All discussions are confidential. In addition the Medical College will provide, on request, training and consultation on the prevention of sexual harassment.

What is Sexual Harassment?

Sexual harassment in the academic environment or in the workplace can threaten a person's academic performance or economic livelihood. The Medical College defines sexual harassment as:

- Unwelcome sexual advances, requests for sexual favors, and other verbal and physical conduct of a sexual nature constitute sexual harassment if:
 - submission to such conduct is made either explicitly or implicitly a term or condition of employment or academic status;
 - submission to, or rejection of, such conduct by a person is used as the basis for an employment decision or an academic decision affecting that person; or
 - such conduct has the purpose or effect of substantially interfering with a person's work or academic performance or of creating an intimidating, hostile, or offensive working or learning environment.

Sexual harassment is sex discrimination and is therefore illegal.

Dealing with Sexual Harassment: Preliminary Action

You can sometimes stop someone from harassing you by taking direct action.

- **Say no** to the harasser. Ignoring the situation seldom will make it go away. If you have difficulty speaking about the situation, write the harasser a note describing the incident that you found offensive and request that it not happen again. Keep a dated copy of the message.
- **Keep a record of what happened and when it took place.** If others were present, include their names in the record. Keep a log of any conversations or actions pertaining to the incident(s).
- **Find out whether other students or co-workers have been harassed.** Together complaints are in a stronger position to deal with the situation and the offender.
- **Seek support from a close friend or trusted associate.** Sharing your feelings and experiences can help you cope with that often is a very difficult, frustrating situation.

If the harassment does not stop, consider discussing the matter with the harasser's supervisor or department chairperson, or with staff members in the Human Resources Department or the Office of Civil Rights and Investigations.

Complaint Procedures

If a supervisor, administrator, faculty member or counselor receives a complaint or inquiry about sexual harassment, it is imperative that the Human Resources Department or Office of Civil Rights and Investigations be contacted (<https://civilrights.weill.cornell.edu>) to provide advice on procedures for sexual harassment cases. Discussions with staff members of that office will help ensure the effective handling of the complaint and reestablish a working or learning environment free of harassment by taking immediate and appropriate action.

Any student or employee of the Medical College who suspects that he or she has experienced sexual harassment, as defined herein, should report the incident. If the reporting person wants to discuss the incident, consider ways in which to deal personally with the situation, or seek a formal remedy for an instance of sexual harassment, the Human Resources Department and the Office of Civil Rights and Investigations will provide assistance.

Grievance procedures exist to protect all students and academic and non-academic staff members.

Title IX Regulations

The Department of Education has recently promulgated regulations implementing the provisions of Title IX of the Education Amendments of 1972, prohibiting discrimination on the basis of sex in education programs and activities. The Medical College is subject to and in compliance with the statute and regulations. The regulations nevertheless require that you be informed of their provisions and these are summarized below:

For students, the regulations prohibit any act or policy which discriminates on the basis of sex or which has the effect of causing such discrimination. Specifically, the regulations prohibit discrimination in admissions, quality of housing, overall administration of financial aid, and access to curricular and extra-curricular activities. A student or applicant may not be discriminated against because of pregnancy, childbirth, or other conditions relating to

pregnancy. Childbirth and other conditions relating to pregnancy must be treated as any other disability for purposes of leaves of absence.

For employees, the regulations likewise prohibit any act or policy that has the effect of treating members of one sex differently from the other. Specifically, the regulations prohibit discrimination in recruiting and hiring, promotion, job classification and assignment, wage and salary rates, fringe benefits, and granting leaves of absence. Pregnancy, childbirth, or conditions relating to pregnancy must be treated as temporary disability for purposes of sick leave or other leave of absence plans. An individual may not be denied employment or otherwise discriminated against because of pregnancy or conditions related thereto.

The Office of Civil Rights and Investigations has been designated to investigate and seek resolution of complaints of all Weill Cornell medical and graduate students, regarding prohibited acts. Students should contact: <https://civilrights.weill.cornell.edu/about-us/staff-directory>

Brittney Blakeney, JD

Title IX Coordinator/Office of Civil Rights and Investigations
575 Lexington Avenue, Suite 670
New York, NY 10022
T 646.962.9796
bsb4002@med.cornell.edu

Mona Jha, JD

Title IX Coordinator/Office of Civil Rights and Investigations
575 Lexington Avenue, Suite 670
New York, NY 10022
T 646.962.3096
moj4003@med.cornell.edu

For urgent matters, contact:

- Campus Security: (212) 746-0911
- The Title IX Coordinator Answering Service: (212) 746-9915

Further information on Weill Cornell Medicine's Title IX resources and student procedures may be viewed here: <https://diversity.weill.cornell.edu/policies/title-ix>

Bias and Hate Related Crimes

Hate/Bias-Related Crime Prevention Statement for Weill Cornell Medical College

New York State law requires Weill Cornell Medical College to inform students about the Hate Crimes Prevention Act of 2000 and how hate crimes (also known as bias-related crimes) can be prevented on campus.

Hate/bias crimes have received renewed attention in recent years, particularly since the passage of the federal Hate/Bias Crime Reporting Act of 1990 and the New York State Hate Crimes Act of 2000 (Penal Law Article 485).

Hate crimes are criminal activity motivated by the perpetrator's bias or attitude against an individual victim or group based on perceived or actual personal characteristics, such as their race, religion, ethnicity, gender, sexual orientation, or disability.

Bias-related behavior includes any action that discriminates against, ridicules, humiliates, or otherwise creates a hostile environment for an individual (female or male) or group protected under this law.

Penalties for Hate/Bias-Related Crime

Penalties for bias-related crimes are very serious and range from fines to imprisonment for lengthy periods, depending on the nature of the underlying criminal offense, the use of violence or previous convictions of the offender. Hate/bias crime incidents that rise to a felony level are reported to the district attorney. Non-felony hate/bias crime incidents may be adjudicated through the *Standards of Conduct* as stated above. Sanctions imposed by the College may include suspension, expulsion or other measures depending on the severity of the crime.

Reporting a Hate/Bias-Related Crime Incident

An individual who believes that she or he has been a target of a bias-related crime is encouraged to immediately report an incident to NYPH Security, the Dean, and the Affirmative Action Officer (in Weill Cornell Graduate School's case this would be Dr. Judith Cukor, the Assistant Dean of Student Affairs). The incident will be reviewed and investigated, and a determination will be made as to how the allegation will be handled.

Grievance Policy

The WCGS Grievance procedure is intended to provide a mechanism through which grievances can be fully investigated and decisions rendered. It covers grievances that involve individual graduate students on issues relating to graduate education and support. Please review the WCGS Grievance Policy online [here](#).

Ethical Conduct and Compliance Hotline

Faculty, staff and students - as well as those outside Weill Cornell Medicine - may confidentially report activities or conduct that are believed to violate a state or federal law or Cornell University policy at: www.hotline.cornell.edu or 1-866-293-3077. This includes violations of Cornell's [Standards of Ethical Conduct Policy](#), life safety concerns, non-compliance with grants and contract requirements, financial irregularities or misreporting, violations of applicable state or federal laws and regulations, conflicts of interest, and other related concerns. Reports may be submitted anonymously, are administered by an independent company, and will be handled promptly and discreetly. No retaliatory action will be taken against anyone for reporting or inquiring in good faith about potential violations of Cornell University's policies or for seeking guidance on how to handle suspected violations.

Sexual Misconduct and Campus Security: Weill Cornell Medical College is committed to providing an employment, education and living environment free from all acts of sexual misconduct, and will not tolerate sexual misconduct by or against students, staff, faculty, alumni or visitors. We will respond promptly and appropriately to all reports of sexual misconduct. Sexual misconduct includes, but is not limited to: sexual assault, sexual violence, sexual abuse, sexual exploitation, rape, domestic violence, sexual coercion and stalking. Sexual misconduct also covers sexual discrimination and sexual harassment. For more information, visit: <https://medicaleducation.weill.cornell.edu/student-resources/sexual-misconduct-campus-security>

The NYP Weill Cornell Victim Intervention Program is an on-site organization that provides crisis intervention and support for survivors of sexual assault, relationship violence, family violence, and physical assault. For more information regarding support and campus security please go to: <http://medicaleducation.weill.cornell.edu/student-resources/sexual-misconduct-campus-security>.

Accessing Student Support Services

Weill Cornell Graduate School is committed to providing students with comprehensive, accessible student support services. Below are guidelines for how to access the various staff who can help provide assistance and support.

Student Mental Health Support

Weill Cornell Medicine's [Student Mental Health \(SMH\) Program](#) offers students access to free, confidential mental health services by appointment. It is staffed by psychologists and psychiatrists from diverse cultural, national, and clinical backgrounds who are skilled in treating a wide range of issues. Appointments are scheduled promptly and in consideration of students' scheduling needs and preferences.

The student mental health service offers a range of services from supportive psychotherapy focused on identifying and enhancing coping skills to consultation and assessment of all psychiatric conditions and treatments including psychotherapy, psychopharmacotherapy, and neuropsychological assessment. Family and marital counseling is also available.

This is not an emergency service and students should expect communication for an appointment during regular business hours Monday-Friday.

- A student must self-refer for the Student Mental Health program and request an appointment.
- Care is confidential and is not part of the student educational record.
- All visits with clinicians are covered under the Student Health Fee - there is no separate charge unless lab tests or image studies are ordered. This is analogous to the care students received at the Student Health office.
- Clinicians have no student evaluation role within the Graduate School.

How to Access Student Mental Health Services

To request an appointment, please send an email including your name and contact information to studentmentalhealth@med.cornell.edu. Students do not need to disclose the details of their concerns when requesting an appointment. The SMH program assistant will respond during regular business hours to schedule your appointment.

If you are in urgent need of emergency assistance during our off hours, please call 911 or go to your nearest emergency room. Help is also available by contacting the National Suicide Prevention Lifeline at 1-800-273-TALK (8255).

Program Director

Patricia Marino, Ph.D.
Associate Professor of Psychology in Clinical Psychiatry
Weill Cornell Medicine
(914) 997-8691
pam2029@med.cornell.edu

For any personal or professional issues, students can contact:

Judith Cukor, Ph.D.
Assistant Dean of Student Affairs
Weill Cornell Medicine
(212) 821-0627
juc2010@med.cornell.edu

Dr. Cukor is a psychologist and will work confidentially with students to assess their needs and provide the appropriate referral or ongoing support. Dr. Cukor is not a member of the graduate school faculty and is not involved in training or progression to degree.

Students who are interested in faith-based counseling can find information about spiritual and religious care resources, for various faiths, at:

www.nyp.org/clinical-services/pastoral-care and/or www.mskcc.org/experience/patient-support/counseling/spiritual-religious-care. Both services are open to seeing WCGS students.

For all immediate medical-related issues students should contact or visit Student Health Services, 230 East 69th Street, 646-962-6942.

Office of Access, Belonging & Student Success

The WCGS Office of Student Diversity was established in 2017 to maintain student retention and provide support to students from underrepresented groups. The goals of the office are to: (1) promote the recruitment and retention of a talented and diverse medical and graduate student body, particularly from populations underrepresented in science and medicine; (2) ensure that all students inclusive of gender, sexual, racial, ethnic, cultural, political, and religious identity and background, have a genuine sense of belonging in the WCM community; (3) help students achieve their highest potential for scholarly excellence and career advancement; and (4) engage and support community service and outreach both in medicine and science to underserved communities. WCGS and the Office of Student Diversity, later renamed Office for Access, Belonging and Student Success, works to ensure that students from underrepresented groups feel welcome and comfortable on campus.

For support students can contact:

Yazmin Carrasco, PhD
Assistant Dean for Access, Belonging &
Student Success

Weill Cornell Graduate School

Ypc4001@med.cornell.edu

Roxana Mesías, PhD

Assistant Director for
Access, Belonging & Student
Success

Weill Cornell Graduate School

rem4008@med.cornell.edu

Members of the Medical College Community Who Potentially Represent a Hazard to the Public and to the Medical College

Two broad considerations underlay the preparation of these guidelines:

1. An awareness that the Medical College, so far as possible, should try to protect patients, students, and employees, and to protect its mission in education and research, from any harm that may come to them because of any action or condition of a student or employee.
2. An awareness that the identification of a person as a potential hazard to other people or to the institution may seriously jeopardize their career and their relation to other people, and that, therefore, every effort must be taken to protect the rights of this person, and to insure that any findings, and any actions based upon these findings, are grounded on demonstrable evidence.

The Nature of “Potential Hazards”

“Potential hazards” arising from the actions or conditions of employees or students might fall into three general categories:

1. Hazards arising from the impaired ability of a person to perform their medical, educational, or other professional activities, including hazards arising from (a) neurological disease or degeneration, (b) emotional or psychological disorders, (c) the use of drugs or medications, and (d) the presence of physical handicaps resulting from illness or injury.
2. Hazards arising from a person's carrying a contagious disease.
3. Hazards arising from the behavior of a person, including a) behavior regarded by patients and by the public as alarming, threatening, bizarre, hostile, or otherwise inconsistent with the duties and responsibilities of the person, and b) behavior that is disruptive for working groups, medical treatment, or educational processes.

Potential hazards to other people or to the Medical College that occur in the context of a person's performance of their professional, medical, or academic duties, or as a part of their employment by, or studies in, the Medical College are a legitimate concern of the Medical College.

Private acts or conditions of students or employees outside of this context, although they are not the responsibility of the Medical College, may, nevertheless, be of legitimate concern to the Medical College in so far as they may imply the existence of a potential hazard, if this person continues his role as an employee or student.

For example, if a person is convicted of the possession of drugs or assaultive behavior, or is admitted to another institution for the treatment of alcoholism, it might well have a condition that represents a potential hazard to the public or to other employees if they continue in their usual activities at the Medical College. Under these circumstances, even though the act in question has occurred outside of the Medical College and was not, therefore, the responsibility of the Medical College, the College might, nevertheless, legitimately wish to investigate whether or not this person represented a potential hazard within the context of the concerns outlined above.

Identification and Reporting of Potential Hazards

Every student, staff member, or other employee who is aware that they have a condition that creates a potential hazard as described above, has a primary responsibility and duty to report this, either to their immediate supervisor or to the Program Director. In situations in which a student, employee or staff member is not sure whether they have a potentially hazardous condition, they are encouraged to seek appropriate counseling and advice. Such counseling and advice is available to all Medical College employees from the Employee Assistance Program Consortium and to students from the physicians or psychiatrists designated by the Office of Student Affairs.

Every student, staff member, or employee, who has good reason to believe that another student, staff member, or employee presents a potential hazard, has a responsibility and a duty to report this to the appropriate supervisor or to the Program Director.

Regardless of the responsibilities of the individual affected, and of other students, staff members, and employees, the immediate supervisor, who observes the presence of a potential hazard, has a specific responsibility to report this to their superior, and through them to the Department Chair or other appropriate administrator at that level, and to the Dean's Office.

Initiation of Action

If it appears that a hazard is immediate and acute, the responsible supervisor, with the concurrence of their superiors (if this can be obtained in time), must take whatever measures appear to them to be necessary and prudent to prevent the person who represents the hazard from harming themselves or any other person; and they will report the incident fully and promptly to their supervisor, and through them to the Program Director, Department Chair or other administrator at that level.

If the hazard is chronic, or only potential or suspect, and if the danger to others is not immediate, the supervisor should report their evidence through their superior to the Program Director, Department Chairman or other appropriate administrator at that level, who will be responsible for initiating any immediate action that they may deem to be necessary or appropriate.

Informing the Person Involved

When the Program Director, Department Chair or other administrator at that level receives a report that a person may represent a potential hazard, they will inform this person promptly and fully of the report that has been made concerning them, of the immediate actions that have taken, and of the investigations that are anticipated. They will give the person an opportunity to respond, will assure them of their right to introduce evidence, and will make an effort to enlist their cooperation.

Informing the Administration of the Medical College

After considering the information available in the case, the Program Director, Department Chairman or other administrator at that level will report this information along with any comments that he believes to be appropriate to the Dean (if a member of the academic staff is involved); to the Associate Dean (if a student is involved); or to the Senior Director, Human Resources) (if any non-academic Cornell employee is involved).

In each case a copy of the report will be sent also to the Office of the Dean and to the Office of Legal Affairs, which will review the information available and advise the appropriate administrator, in order to insure compliance with the necessary procedures, fulfillment of the responsibilities of the Medical College, and protection of the rights of the individual concerned.

Investigation of Potential Hazards

The underlying principles governing the reporting, investigation, and actions taken with respect to potential hazards should be the same for all people, whether they are students, academic staff members, or other employees.

Members of the Medical College community fall into three groups: the academic staff (including all individuals with academic appointments at the Medical College whether salaried or not), the students, and other employees. The actual administrative procedures for the investigation of potential hazards within these groups are carried out by somewhat different procedures. However, it should be understood that there will be no discrimination between academic staff members, students, and employees with regard to the level of proof required, the concern for the rights of the person, and the general nature of the corrective procedures, that are carried out. The Office of Legal Affairs and the Dean's Office will monitor the procedures in every case, to insure that this is true.

In the case of students, investigations will be carried out through the Office of the Senior Associate Dean, utilizing, when necessary, a special *ad hoc* committee of faculty members, who will call upon medical and other consultants and examiners, if necessary, in order to determine the facts in each case, and will recommend to the Dean what action should be taken.

In the case of academic staff members, the Dean, after consulting with the Department Chair, will, when necessary, appoint an *ad hoc* committee of faculty members, who will then call upon medical and other consultants and examiners, if necessary, in order to determine the facts of each case and to recommend to the Dean what action should be taken.

In the case of other employees, the Associate Dean or Senior Director, Human Resources, after informing the Dean's Office and the Office of Legal Affairs, will ask the Department of Occupational Health to carry out any necessary medical investigations by using its own staff and calling upon outside consultants when necessary.

Decision as to Whether a Potential Hazard Exists

The decision as to whether or not a potential hazard exists is an administrative responsibility. When it is brought to the attention of the senior responsible administrator that there is sufficient reason to believe that a potential hazard exists, based on the occurrence of acts, behavior or conditions outlined in this policy, it is the responsibility of this administrator to initiate the effort to determine whether or not the hazard actually does exist, and to take whatever long-range action is necessary to protect patients, students, or employees of the Medical College.

As a part of the effort to determine whether or not a potential hazard does exist, and to initiate the proper action, it can be expected that the administrator will call upon the opinions and the experience of appropriate members of the

professional staff, of the Department of Occupational Health, and of the Personal Department, as well as other medical or legal consultants; and the information and opinions provided by these consultants may be critical in determining the decision that is made by the administrator. Nevertheless, the decision as to whether or not there is a potential hazard and what action is to be taken must be an administrative decision.

The responsibility for initiating and carrying out the actions described in this section rests with the Dean (in the case of members of the academic staff), with the Associate Dean (in the case of students), and with the Senior Director, Human Resources (in the case of non-academic employees); the responsibility for the ultimate decision rests with the Dean.

Confidentiality

Because of the potential harm to the reputation, associations, and career of a person who is suspected of being a source of hazard, every effort should be made to protect the confidentiality of the information concerning them, and the actions taken in their case. However, in view of the responsibility of the Medical College and of its staff for the protection of patients, students, employees, and other people from harmful acts or conditions of its staff or employees, there cannot be a guarantee of complete confidentiality when this runs counter to other legal and ethical responsibilities.

Protection of the Rights of the Individual

To identify an employee as a "hazard" to other employees or to the public could have a severely adverse effect upon their career, their employment, and their standing in the eyes of other people. On the other hand, to fail to identify and deal properly with employees who are potential hazards might do severe damage to the institution, to its other employees and students, and to the patients and other members of the public whom the institution wishes to protect. These two considerations may be complicated by the fact that in many cases, a decision as to whether a hazard does or does not exist must be based upon the informed judgment of experienced people, and that there may be legitimate differences of opinion about the conclusions reached.

For these reasons, when a person is reported to be a potential hazard, this report and the investigation stemming from it shall be held in strict confidence by those individuals with whom the information is shared until all of the facts have been ascertained; if the findings indicate that a potential hazard does exist, the actions undertaken shall be carried out as discreetly and confidentially as possible, with as little harm to the person, their career, and their standing in the community as is possible, and as much effort to be helpful and rehabilitative as possible.

It is extremely important to ensure that the medical and administrative investigations of reports be carried out in a fully competent manner, and that the actual presence or absence of a hazard be ascertained as concretely and definitively as possible.

It is also important that the person about whom the report has been made be fully informed of the nature of the report; that every effort be made to get them to cooperate with and understand that both medical and administrative investigations are necessary; and that they be given an opportunity to object to any procedures that they think are inadequate or inappropriate, and to ask for additional procedures or confirmatory opinions, if he wants these.

When reports of potential hazards are received in the Dean's Office, the staff and the Medical College legal advisor will ensure that these are directed to whichever of the three channels of investigation are appropriate, and ensure that the employee agrees to this. If the employee contends that no potential hazard exists and refuses to agree to an investigation by the usual procedure, the Dean may, at his discretion, convene an ad hoc committee of not more than three faculty members, who will consider the report and the evidence and will advise the Dean on whether or not an investigation should be carried out by the Medical College regardless of the wishes of the employee, and how this might be carried out.

Actions to Be Taken

The administrative actions to be taken in any case must be based upon all the facts that are pertinent to that case. Whatever the actions, they should be taken as discreetly as possible with an effort to protect the privacy of the individuals concerned. Where there is the reasonable possibility of medical treatment or other rehabilitation, an

effort should be made to extend this to the person who has been deemed a hazard, and to restore this person to their full ability and capabilities if this is a reasonable thing to do.

Substance Abuse Policy

The Medical College recognizes that its students are potentially vulnerable to the alarming personal and societal problems caused by alcohol and drugs. Therefore, the Medical College offers aid to students who seek help for a drug or alcohol problem. Illegal possession of, distribution of, or trafficking in any drugs, or the abuse of drugs or illicit use of mind-altering drugs, or the abuse of drugs or alcohol are violations of Medical College policies. Such violations are not in accord with the Medical College's requirements of fitness or suitability for medicine as stated above in the Standards of Conduct. Alleged violators of these policies will be reviewed according to the procedures employed to determine a student's fitness or suitability for medicine and research.

Statement on Illegal Drugs and Substances

State and Federal law prohibit the possession, use and distribution of illegal drugs and substances.

The unlawful manufacture, distribution, dispensation, possession, or use of a controlled substance by any member of the Weill Medical College community, including employees, faculty members, students and visitors, is prohibited at all Cornell facilities including residences. Appropriate action including termination and/or dismissal will be taken for violations of the foregoing prohibition.

The University recognized the convincing medical evidence that the use of illegal drugs and substances poses a significant threat to health and condemns the use of such drugs and substances as harmful to the physical and psychological well-being of the user and the well-being of the Cornell community.

Notify the person's supervisor, department chairperson, or dean of any criminal drug statute conviction (including acceptance of a guilty plea by a judicial authority) for a violation occurring in the workplace no later than five (5) days after such conviction.

The University will not condone criminal activity on its property, or on property under its control, and will take appropriate action whenever such conduct is discovered to enforce the law and its own internal regulations.

Statement on Drug and Alcohol Abuse

Federal and New York laws and University regulations prohibit the illegal possession, use and distribution of illicit drugs and alcohol.

The unlawful manufacture, distribution, dispensation, possession, or use of an illicit drug or alcohol by any member of the Weill Medical College community, including employees, faculty members, students and visitors, is prohibited at all Cornell facilities (including residences) and activities. Appropriate action including termination and/or dismissal will be taken for violations of the foregoing prohibition.

The University will not condone criminal conduct on its property, or at Cornell or student sponsored activities, and will take appropriate action whenever such conduct is discovered to enforce the law and its own internal regulations. Violators of Federal and state laws may also be referred to appropriate civil and criminal authorities for prosecution.

Drug-Free Workplace Policy and Statement

The Drug-Free Workplace Act of 1988 requires Weill Medical College, as a Federal grant recipient and contractor, to certify that it will provide a drug-free workplace by, among other actions, requiring that each person engaged in a Federal grant or contract (including personnel and consultants) be given a copy of this Statement and notifying such person that as a condition of participation in such grant or contract, the person will:

- abide by the terms of this Statement; and

- notify the person's supervisor, department chairperson, or dean of any criminal drug statute conviction (including acceptance of a guilty plea by a judicial authority) for a violation occurring in the workplace no later than five (5) days after such conviction.

Weill Medical College shall, within thirty (30) days after receipt of notice take appropriate action against such person up to and including termination or dismissal, and/or require such person to satisfactorily participate in a drug assistance or rehabilitation program.

Sanctions

Violations of University Policy can result in termination, suspension or expulsion from the university.

Faculty and non-academic staff can be subject to disciplinary action up to and including termination of employment.

Student violators can be subject to disciplinary action up to and including dismissal. Any drug or alcohol abuse violation may become part of a student's permanent record and may impact on a student's fitness or suitability for advancement.

Sanctions can include severe criminal penalties such as fines and/or imprisonment. The severity of the penalty depends upon the nature of the criminal act and the identity and amount of the drug involved. Examples of legal sanctions under Federal and New York laws:

- **LSD:** Possession with intent to sell can result in up to seven years in prison.
- **Marijuana:** Sale to a person under the age of 18 years can result in up to seven years in prison.
- **Cocaine:** The possession of four or more ounces, or the sale of two or more ounces, can result in a minimum of 15-25 years, and a maximum of life in prison.
- **Alcohol:** It is illegal in New York:
 - For anyone under the age of 21 to possess with the intent to consume alcohol. A violation can mean up to a \$50 fine.
 - For anyone of any age to give or sell alcohol to anyone under the age of 21, to anyone who is already drunk, or to anyone who is habitually drunk. A violation can mean three months in jail and up to a \$500 fine.

Drug Screening

Procedure

In the event a student is required to undergo drug screening to remain in school, the student will be required to obtain and complete a Drug Screen Consent and Release Form available from Work Force Health and Safety. Workforce Health and Safety is open between 8 a.m. and 4 p.m. on business days and is located in the Payson House basement at 1315 York Avenue.

The drug screening provided by the vendor shall include testing for *at least* the following substances:

- Amphetamines
- Barbiturates
- Benzodiazepines
- Cocaine Metabolite
- Marijuana (THC) Metabolite
- Methadone
- Methaqualone
- Opiates
- Phencyclidine (PCP)
- Propoxyphene (Darvon)

Students with a positive drug screen will have an opportunity to consult with a Medical Review Officer (MRO) to verify whether there is a valid medical explanation for the screening results. If after review by the MRO there is a valid medical explanation for the screening result. If, after review by the MRO there is not a valid medical

explanation for the positive screen, then the test results will stand and will be treated as a positive result as outlined below.

Handling of Results

All results from drug testing will be forwarded to the student's designated health care professional.

Positive results will be forwarded to the Associate Dean of Academic Affairs, Dr. Randi Silver <rbsilve@med.cornell.edu>, or designee.

Health Risks

The university recognizes the convincing medical evidence that alcohol abuse and the use of illegal drugs and substances pose a significant threat to health and considers alcohol abuse and the use of such drugs and substances as harmful to the physical and psychological well-being of the user and the well-being of the Cornell community.

The following list by category is only a short sampling of some risks involved:

Narcotics: Slow and shallow respiration, clammy skin, convulsions, coma, and death.

Stimulants: Increased pulse rate, blood pressure and body temperature; insomnia, agitation, convulsions, possible death.

Hallucinogens: Illusions and hallucinations, distorted perception of time and distance, psychosis, possible death.

Cannabis: Disoriented behavior, fatigue, paranoia, and possible psychosis.

Alcohol: Drowsiness, impairment of judgment and coordination, liver and heart damage, respiratory depression and death. Mothers who drink during pregnancy risk giving birth to infants with fetal alcohol syndrome, which can include irreversible physical abnormalities and mental retardation.

Counseling and Treatment

Cornell provides various awareness and education programs for faculty, staff and students about the dangers of illegal drugs and the abuse of alcohol. Confidential support services are available for those with abuse problems who individually pursue treatment and counseling.

A Drug-Free and Alcohol Abuse Awareness Program has been established at Cornell to inform members, staff and students about the dangers of drug and alcohol abuse in the workplace, the University's policy of maintaining a drug-free workplace, available drug and alcohol abuse counseling, rehabilitation and employee assistance programs, and the potential penalties for drug and alcohol abuse violations. Further information is available from the Human Resources Department, supervisors, department chairpersons or deans.

The Employee Assistance Program (EAP) is a short-term counseling and referral service for drug and alcohol abuse as well as other employee concerns. Through the EAP, eligible employees and their dependents may obtain free counseling for substance and alcohol abuse issues which affect them and their families. EAP counselors will assess each case and may make a referral to an appropriate internal program or outside agency best suited to address the rehabilitation needs. EAP counselors will also assist in determining how Cornell health insurance will be helpful in covering costs. The Academic Staff Handbook and Employee Handbook contain further information about the Employee Assistance Program. An EAP counselor can be contacted by calling 1-212-746-5890.

Students are reminded to review the Substance Abuse Policy (which covers illicit drug and alcohol abuse) set forth in the Student Handbook and that any drug or alcohol abuse violation may impact on a student's fitness or suitability for advancement. Professional staff and advisors are available to assist and direct students to internal and outside programs. Students may also obtain assistance by contacting the Weill Medical College Student Health Service at: (646) 962-6942, <https://medicaleducation.weill.cornell.edu/student-resources/student-health-services> or

The Student Mental Health Service at:
(1 914) 997 8691
[Student Health Services](#)
[Student Mental Health](#)

Institutional Review

Weill Cornell Medical College will conduct a biennial review of its drug and alcohol abuse policies and programs to determine the effectiveness of such policies and programs, implement any necessary changes, and ensure consistent enforcement of required sanctions.

No Smoking

Smoking is prohibited on the Weill Cornell Medical College campus, including buildings, courtyards, entrances, garages, plazas, sidewalks, and all facilities controlled by Weill Cornell Medical College.

Students who observe anyone smoking on campus should courteously notify the person smoking that smoking is prohibited or alert security officers or Environmental Health & Safety to the infraction.

Students seeking to quit smoking may contact the Student Health Service to receive information about and referrals to smoking cessation programs.

STUDENT HEALTH

The Medical College is dedicated to providing the finest medical care to its students. The following summary highlights the Student Health Service (SHS) and the Student Insurance Plan (SHP).

All students must have comprehensive health care coverage and participate in SHS and SHP. The Medical College has designed a package, which should meet the needs of most students and their dependents. The program consists of 2 integrated components: the SHS and SHP underwritten by Cornell University and administered through Aetna Student Health. Enrollment and waiver services are managed through Gallagher Student Health & Special Risk. In brief, students who use the coordinated program will have their choice of participating physicians (many faculty members) with modest co-payments. In this program, students also have the option to go outside the Aetna network, but will be required to meet a deductible and higher out-of-pocket costs. Optional dental and vision care coverage is available through separate programs at additional cost.

If a student needs to purchase additional coverage for a spouse, the student should refer to the dependent health insurance rates section of the [website](#).

An enrollment waiver must be completed annually (deadline of June 30th) or within the first 30 days of your program start date.

Student Health Services

Dependents under the age of eighteen are not seen in the student health center. With the Medical College's plan for families, dependents under the age of eighteen are fully covered for all care if they are seen by participating pediatricians.

The SHS Medical Director is the primary care provider for all students and is not involved in the academic evaluation of students. In conjunction with the registered nurse, all non-emergency medical problems, occupational health and preventive care are managed at SHS. After hours and weekends there is limited telephone coverage available for emergencies. The SHS Medical Director determines the need and appropriateness of referrals to specialists/subspecialists and should be consulted for referrals.

Location: 230 E 69th St (between 2nd and 3rd Aves)
New York, NY 10021

Telephone: (646) 962-6942

Hours: Currently: 8:00 am- 12 noon and 1:00 - 4:00 pm, Monday - Friday,
by appointment

After Hours: Urgent/Emergency Care - Physician-on-Call Service

To reach the doctor on call after hours, dial the answering service at (646) 962-6942. If urgent medical care is needed, the physician will direct the student to NewYork-Presbyterian Hospital.

Services Available at SHS

Most services rendered within the confines of Weill Cornell Medicine Student Health Services are done so at no additional charge beyond the annual SHS Fee. Services performed outside of SHS, including consultations, labs and imaging will be billed to insurance.

The Director of the Student Health Center is a family medicine trained physician with broad expertise, and together with their nurse provides care in many areas including:

- evaluation and management of common conditions in primary care, "sick visits".
- chronic disease management
- contraceptive counseling and management
- cervical cancer screening
- routine physicals and other preventive services

- primary care mental health screening and treatment
- sports medicine care
- occupational health services (management of body fluid exposures, needle stick injuries)
- pre-travel consultations
- immunizations
- allergy shots (in consultation with an allergist)
- ancillary services, including phlebotomy; and a limited number of point-of-care testing, such as urine dipsticks and rapid strep throat tests; completion of elective rotation requests and other forms
- referrals to other specialists, including mental health services, laboratories and imaging centers as needed

Student Health Services and Attendance

Student Health Services cannot excuse students for missed educational and rotation activities. It will, however, evaluate and treat students and provide documentation that a student was seen at SHS. Faculty will determine the need for making up missed work if appropriate. If a student has a condition that poses a risk to patients in the clinical setting, or others in the academic or research setting, Student Health Services will assist in determining appropriate restriction of duties.

Students in the Medical College's plan: you do not need written referrals, however, we recommend that you obtain a recommendation from the Student Health Service as we have long standing relationships with many participating physicians in many specialties at the Medical Center and outside the medical center.

Students with other health insurance: you do not need the SHS Director's approval or referral, but you are encouraged to obtain a recommendation from the SHS Director, as he may know "student friendly" physicians that may participate in your plan. Students are responsible for familiarizing themselves with their plan benefits, restrictions, and provider network and payment procedures.

Students are responsible for arranging the appointment and for handling billing and charges.

Medical Emergencies

Students experiencing life-threatening emergencies should proceed to the nearest emergency department for evaluation and treatment. Students with other urgent medical needs are advised to first call the Student Health Services after-hours number.

1. Call the physician on-call service: (646) 962-6942
2. Leave your name, contact information, and the nature of your problem.
3. If there is available coverage, the physician on-call will return your call. For a true medical emergency, proceed directly to the nearest Emergency Department.
4. If it is not necessary for you to have immediate medical care, the physician will recommend appropriate measures. If the physician determines that you need immediate attention, the physician may advise you proceed to the nearest emergency department.
5. If you visit the emergency department at NewYork-Presbyterian Hospital, bring your insurance cards and I.D. Identify yourself as a Weill Medical College student at registration.
6. Students seen in the Emergency Department should contact Student Health Services the next business day.

Students are financially responsible for care provided outside of Student Health Services subject to insurance copays, coinsurance, and deductibles.

Immunizations and Other Health Requirements

COVID-19: New York State Department of Health requires all Weill Cornell Medicine faculty, staff, and students to have a COVID-19 vaccine and booster as part of comprehensive prevention against the COVID-19 virus. Students must provide documentation they have completed a primary vaccination (one or two dose product) and a subsequent booster vaccination of an FDA-approved or WHO-authorized vaccination.

Measles, mumps, and rubella: New York State Public Health Law requires you to be immune to measles, mumps and rubella. Our institution prefers demonstration of proof of immunity by serologic titer but will accept valid immunization records. Any student who is not immune by titer (e.g. negative, inconclusive or equivocal) will require boosters. There is no fee for *required* vaccines given at SHS. Titers may be drawn at Student Health Services for students who have not provided lab reports prior to matriculation. If you are allergic to any of the vaccines or vaccine components, you will need to provide documentation from a physician not related to you. There is no “moral objection” permissible for vaccination for health care workers. If you have had titers drawn previously, provide copies of the lab reports to the Student Health Service in addition to your immunization record. Neither documentation of being “immune” without actual lab reports nor clinical history of disease is sufficient proof of immunity. Laboratory reports must be in English. Noncompliance with MMR requirements within 30 days of the start of classes may result in the student's inability to attend classes per NYS Public Health Law Section 2165.

Hepatitis B: The hepatitis B vaccine will be offered to all students free of charge at Student Health Services. We recommend that 1st year medical and graduate students begin the three injection series upon arrival at the Medical College if they have not received the vaccine previously. We require proof of immunity by *serologic titer* if there is no prior lab report of immunity. Lab reports must be in English. Students who are not found to be immune may need to undergo additional testing to exclude chronic infection with Hepatitis B, and/or repeat two- or three-dose series.

Meningitis: New York State Public Health Law requires all college and university students to complete a meningitis information response form. It acknowledges that you have received information about meningococcal meningitis and the availability of a vaccination. You are not required to have the vaccination. Students may receive the vaccine from their own healthcare providers or health department. If you did not receive information on meningococcal meningitis or the response form in your SHS pre-matriculation information packet, please contact SHS. Noncompliance with the meningococcal response form within 30 days of the start of classes may result in the student's inability to attend classes per NYS Public Health Law Section 2167.

As per the Centers for Disease Control and Prevention's guideline for infection control in healthcare personnel, and working agreements with NewYork-Presbyterian Hospital, the following additional vaccines and screening are required:

Varicella: A positive *titer* indicating immunity or documentation of two doses of vaccine at least 30 days apart with a follow-up *titer*. Clinical history of disease is not sufficient proof of immunity for our campus. Titers will be checked at SHS if there is no lab report provided with registration materials.

Tetanus–diphtheria (Td) or tetanus–diphtheria–acellular pertussis (Tdap): Completion of the childhood series, and at least one dose of Tdap vaccine since 2005, with Td or Tdap every 10 years after.

Tuberculin screening: All students matriculating on/after 7/1/2020 are required to have an interferon gamma release assay (Quantiferon or T-spot) as a baseline screen for tuberculosis as part of their student health onboarding requirements. Students with a negative baseline will have annual screening and symptom in accordance with New York State tuberculosis screening guidelines.

Students who matriculated prior to 7/1/2020 have had 2-step and annual tuberculosis skin testing performed but will be transitioned to interferon gamma release assays for yearly screens on subsequent annual health reviews.

Students with a positive interferon gamma release assay and no prior history of prior tuberculosis treatment (latent or active) will need a chest x-ray, symptom evaluation and should be offered treatment. Students with a prior history of tuberculosis treatment will need an updated x-ray, symptom review, and should be prepared to provide proof of prior treatment.

Laboratory and x-ray reports must be in English.

Periodic health assessments: A completed history and physical examination should have been performed prior to your matriculation. If it is incomplete, such student may be asked to be evaluated at SHS, or restricted from classroom activities, or both. Clinical students will undergo a pre-rotation health assessment at the end of their pre-clinical years in preparation for rotations at NewYork-Presbyterian Hospital and its affiliates. This must be completed prior to starting the clinical rotations or students may be prevented from participating on the rotations. Students conducting research with animals may require periodic health screening by completion of an animal handler questionnaire.

Influenza: All students with patient contact are required to receive a flu vaccination when it is available and if there is no medical contraindication. All other students are strongly advised to be immunized against influenza. It is provided free of charge during the fall and early winter (assuming supplies are adequate).

SHS follows all applicable Medical College and NewYork-Presbyterian Hospital Policies and Procedures. We will notify you of any additional screenings, vaccinations, or policies that may be recommended after the printing of this edition. Other academic and clinical locations/affiliates may have additional requirements beyond our own that we will help students meet on a case-by-case basis.

Students with questions about medical or religious exemptions to certain vaccines should contact Student Health Services at shs@med.cornell.edu for guidance.

Medical Records

All medical information is documented in the campus enterprise electronic medical record and subject to all applicable local, state and federal laws with regards to medical records privacy and security. Records generated at SHS are not released to any other party without a signed, written release of confidential medical information. Immunization records are provided free to the student while they are still attending WCMC. A charge may be assessed on medical records and immunization records after a student has graduated.

Students with chronic medical conditions or complex medical backgrounds wishing to coordinate care at SHS should have medical records sent to the following mailing address:

Weill Cornell Medicine Student Health Services

1300 York Ave Box 258

New York, NY 10065

SHS does not pay for records requests.

E-Mail Communications

Student Health Services sends out monthly e-mails to all student listservs with important announcements, deadlines and updates. Students utilizing non-WCMC email clients are advised to set up filters to ensure delivery of these important messages. Blast emails will only be sent to official Weill Cornell Medicine e-mail addresses.

Limitations of E-mail

SHS is committed to the privacy of the people who rely on us for care and the confidentiality of their health information. State and federal laws also protect the confidentiality of this sensitive information.

Students need to be aware that:

- E-mail cannot be considered a confidential mode of communication.
- E-mail should not be considered a replacement for direct, face-to-face contact with a provider.

Guidelines for the Use of E-mail

To help ensure privacy, patients and clients are cautioned against sending sensitive, detailed personal information to SHS via e-mail.

SHS staff members limit the use of e-mail communication to:

- General questions

- Appointment reminders
- Routine follow-up

A health care provider may recommend that a student make an appointment for more complex concerns. Please be aware that copies of e-mail communication may be placed in your confidential medical record.

E-mail should *never* be used to convey information of an urgent nature to SHS. SHS cannot guarantee prompt responses to e-mail messages. Students who have an urgent physical or mental health concern (about yourself or someone else) can call SHS for a telephone consultation with a health care provider.

Student Mental Health Services

Confidential, prompt, and responsive care is the hallmark of the Student Mental Health Program (SMHP). The service provides confidential and comprehensive evaluation and diagnosis of mental health/behavioral disorders and substance abuse problems. You may contact the SMHP directly and you do not need a referral to do so. To request an appointment, please send an email including your name and contact information

to studentmentalhealth@med.cornell.edu. Access to the SMHP is included in the annual student health fee.

Students receive high quality and confidential treatment, including various types of psychotherapy (individual and group therapies), pharmacotherapy, and neuropsychological assessment.

Students are strongly advised to utilize this resource before pursuing behavioral/mental health care elsewhere, as (1) this team comprises Weill Cornell psychiatry faculty who have significant experience and expertise in providing psychiatric care to professional students, (2) these services will be provided at no cost, and (3) compliance with privacy and confidentiality regulations can be assured.

For more information see: <https://medicaleducation.weill.cornell.edu/student-resources/student-health-services/mental-health-services>

Privacy and Confidentiality

Weill Cornell Medicine Student Health Services staff follow the requirements of the Family Educational Rights and Privacy Act (FERPA) and the Health Insurance Portability and Accountability Act (HIPAA) to ensure the privacy and confidentiality of all student medical records. Personal information collected at SHS will be used solely for treatment, payment and operations and will not be disclosed to any outside parties unless legally obligated to do so.

Students are expected to activate their online patient portal to access all lab test results for tests performed at Student Health Services. Students who request laboratory results by telephone must speak to the Nurse Administrator giving their name, date of birth and identifying the specific laboratory test. Results will not be sent by e-mail.

Laboratory tests are usually performed by New York Presbyterian Hospital laboratories and are entered into the computer system by name and medical record number. This system is able to track who has accessed results. Patients concerned about a breach in privacy may contact the Privacy Officer at New York Presbyterian Hospital. Requests for student medical information by any individual or organization outside of Weill Cornell Medicine will be directed to the Director of Student Health for review. Unless so required by law, no medical information will be released without the approval of the Director of Student Health, the student, and in rare cases the Office of Legal Affairs.

If a needle stick injury occurs, students are encouraged to follow the specific guidelines outlined by the policy in this Handbook. If the student wishes to preserve confidentiality, open discussions with other students, house staff and staff physicians are discouraged.

Initial Management of Needle Stick and Bodily Fluid Exposure

All puncture wounds and other exposures to blood and body fluids should be reported immediately to Weill Cornell Medicine Student Health Services or to the NYPH-Weill Cornell Center (NYPH WCC) Emergency Department. This policy applies to all students at the Medical College and the Graduate School of Medical Sciences

An exposure is defined as contact by: (1) needle stick or sharp puncture wound; (2) open cut, burn or abrasion contaminated by body fluids or tissues (blood, blood products, bloody fluids, semen, CSF, amniotic fluid, menstrual discharge, pleural, peritoneal, pericardial fluid, inflammatory exudates, any other body fluid or tissue contaminated with blood); or (3) splash to mucous membranes (e.g., eye or mouth) with such materials.

According to the CDC, you should be evaluated and treated within two hours for maximum benefit of therapy; therefore, this policy has been established.

Instructions for Students Exposed to Blood or Bodily Fluids

1. Wound care should be done immediately at site of accident, if possible.
 - Clean wound with soap and water.
 - Flush mucous membranes with water/saline.
 - Give other wound care as dictated by injury or accident.
2. If available, obtain:
 - patient's name and ID #;
 - HIV risks and hepatitis status, if known; and
 - names and pager numbers of the attending and/or supervising resident physicians.
3. Inform a colleague that you are returning to the Medical College or NYPH-WCC. Proceed directly to:

Full time WCM students:

Business days between 8:00a.m. and 4:00 p.m.:

Weill Cornell Student Health Services: 230 East 69th Street; 646-962-6942

Nights, weekends and holidays:

NYPH Emergency Department: 68th Street between York Ave and the East River

Taxi fares from a local affiliate for this purpose will be reimbursed by Student Health Services with submission of an original receipt.

Visiting Students:

Business days between 8:00a.m. and 4:00 p.m.:

WHS (Workforce Health & Safety): 1315-1319 York Avenue, Basement; 212-7464370

Nights, weekends and holidays:

NYPH Emergency Department: 68th Street between York Ave and the East River

4. Students seen at SHS or NYPH will undergo a post-exposure evaluation. The post-exposure confidential medical evaluation and subsequent follow-up will document the route(s) of exposure, and the circumstances under which the exposure incident occurred; identification and documentation of the source individual, post-exposure prophylaxis (when medically indicated), counseling; and evaluation of reported illnesses.
5. Students seen at NYPH must follow up with Student Health Services the next business day for reporting.
- 6.

If a needle stick or exposure occurs while a student is on an away elective or rotation, (non-local hospital, or hospital setting not affiliated with the Medical College) immediate evaluation and treatment will be available within the guidelines and policies of that institution or facility, according to the patient's wishes and within the confines of their insurance guidelines. Students may be referred to a local emergency department. Students must contact SHS for reporting and follow-up as soon as they are able to do so.

Needlestick and body fluid incident reports are sent to Environmental Health and Safety as part of the overall campus safety plan.

The Americans with Disabilities Act (ADA)

Students with disabilities who would like more information about the process for requesting disability services are encouraged to meet with their Program Director and Assistant Dean for Student Affairs..

The American with Disabilities Act (ADA) as amended in 2008 defines a disability as a physical or mental impairment that substantially limits one or more major life activities.

Any student with a documented disability who is requesting disability service must submit current and comprehensive documentation from a licensed professional to the Student Accommodations Coordinator, Devin Sullivan at des4014@med.cornell.edu for review. If documentation is insufficient to determine eligibility for disability services or appropriate reasonable accommodations, additional information may be requested. As many accommodations require advance notice to arrange, students must submit their requests well in advance of the

accommodation. A minimum of two weeks is usually necessary. Questions regarding the accommodations process may be directed to the Student Accommodations Coordinator, or to the Assistant Dean of Student Affairs.

Childcare

Program Overview: Bright Horizons' back-up care programs provide a safety net for those days when regular dependent care arrangements fall through. The *Back-Up Care Advantage Program* supplements, rather than replaces, these arrangements and is a comforting emergency alternative when you need it the most. Costs are described below.

Bright Horizons' Center-Based Child Care Network: The *Back-Up Care Advantage Program* provides your child with access to high-quality back-up care programs at Bright Horizons child care centers located close to your home or work, when your child's regular care arrangements have fallen through. The age groups primarily served at our centers include infant -- Pre-K. Additional age groups including school age may be supported at various locations across the country.

Extended Network Center Based Child Care: You have the option to use one of our extended network child care locations close to your home or work in the event you are unable to identify a suitable Bright Horizons' Community Child Care Center to meet your child's needs. You can take comfort in knowing our network of child care centers meets established standards of quality for accreditation or state licensing, including developmentally appropriate curriculum, appropriate health and safety policies, teacher-to-child ratios, and teacher qualifications.

In-Home Care: You also have access to Bright Horizons' nationwide network of high-quality childcare providers qualified to provide your child with a safe and secure in-home care experience. Personal care assistants, home health aides, and nannies commonly provide care in a child's home.

In-Home Mildly Ill Care: Mildly ill in-home care is available when your child is injured or suffering from a common, short-term non-contagious illness or shows symptoms of an illness. It does not matter whether your child is an infant, toddler, preschool-aged, school-aged, or a teenager. Bright Horizons Family Solutions knows the concern you have about the quality of care your child needs to feel better and has built a nationwide network of home health care professionals to provide your family with confidence that your child's health care needs are being met while you are at work.

Adult/Elder Care: Back-up adult care is also available in your home or the home of your adult relative. Providers can assist in caring for your family member who requires homemaker or companion services (such as household tasks, cooking, shopping and laundry), personal care services (such as help with dressing, bathing and toileting), or even medical care (such as the administration of medication, dressing and wound care, and blood pressure and diabetes monitoring). Non-medical adult care is provided by sitter companions, personal care assistants, and home health aides. Medical care is provided by certified nursing assistants (CNAs), licensed practical nurses (LPNs), or registered nurses (RNs) depending on the medical skill level needed.

Self-Care: Self-care is available in the event an employee is in need of assistance. Restrictions on utilization are the same as for any other adult/elder care request and counts against the employees available usages for the contract period.

To sign up:

- 1) Go to <http://www.backup.brighthorizons.com>
- 2) Login with username: WeillCornell // password: 4backup
- 3) You will be asked to provide an 8 digit ID number when registering and requesting backup care.

Costs

Center-based child care @ \$15/child or \$25/family
In-home child and/or adult/elder care @ \$6/hour (minimum 4 hours)
Up to 10 days of use per calendar year

LIBRARIES

Samuel J. Wood Medical Library

<https://library.weill.cornell.edu/>

The Samuel J. Wood Medical Library (located just inside the 1300 York Avenue lobby) is the principal information resource of the Weill Cornell Medical College and Graduate School of Medical Sciences of Cornell University and the NewYork-Presbyterian Hospital/Weill Cornell Medical Center.

Composed of the Samuel J. Wood Library and the C.V. Starr Biomedical Information Center, the library is committed to ensuring effective retrieval and use of information to create new knowledge and improve health.

Basics and SMARTDesk

SMARTDesk - Phone 646-962-2570. Open seven days a week. Staff can help you with the following:

- Register for Library borrowing privileges- please bring your I.D. card
- Check out a wireless laptop
- Learn how to use ITS-provided software like Microsoft Office
- Get your mobile device tagged
- Request a mediated search by an information specialist or receive answers to reference questions. You can also text them at 646-593-7542, email a request to infodesk@med.cornell.edu, or use the "Ask a Reference Question" or chat reference links on the website.

SMARTDesk is open during the following hours: (check "link here" for details and hours of operation")

- Monday - Friday 9 am - 6 pm
- Saturday 10 am - 6 pm
- Sunday 12 pm - 8 pm

Interlibrary Loan and TripSaver – If we do not own an item, we will get that item free of charge for you from another library. Requests usually arrive within a week. With our TripSaver service, we will pull items in our collection and scan them for \$5.

Tri-Cat Catalog – The shared online catalog of WCM's Samuel J. Wood Medical Library, Rockefeller University, and Memorial Sloan-Kettering Cancer Center. It lists not only the print holdings but also has direct links to electronic books and journals. You can limit your searching to "Weill Cornell Medical College (E-Resources only)."

Regular Library Hours: (You must present a valid ID when entering the library.)

- Monday - Thursday: 8 a.m. - 12 a.m.
- Friday: 8 a.m. - 8 p.m.
- Saturday: 10 a.m. - 8 p.m.
- Sunday: 12 p.m. - 12 a.m.

See website (<https://library.weill.cornell.edu/>) for holiday schedules.

The 24/7 Study Room is only available to WCMC medical, graduate and PA students, clinical fellows, and residents.

See website for summer and exam hours and holiday closings.

Computers and Wireless

1. **Desktops** – All computers are fully networked and have Microsoft Word, PowerPoint, and Excel. Computers located downstairs in the Computer Room also have EndNote & SAS.
2. **Wireless networks** – ITS tagged laptops use WMC Secure. For guest access, use WMC Guest Services.
3. **Laptop checkout** – Check out a wireless laptop from the Circulation Desk for use while in the Library.

Library Etiquette

Cell phone conversations limited to the Commons (main room just inside Library entrance).

Food and drinks limited to the Commons. Drinks in spill-proof mugs are allowed throughout the Library. You can purchase a Library spill-proof mug at the Cornell Store or Smart Desk.

Services

Classes – Free classes are offered each semester, such as Unleash the Power of Google and EndNote Basics.

Request a consultation – Our Education & Outreach department provides customized orientations, library tours, help with literature searching and clinical & community outreach services.

SCISSORS – A suite of services for researchers: get help with formulating questions, setting up search alerts, literature reviews, planning for meeting presentations or grant proposals, complying with NIH Public Access Policy, manuscript preparation, and journal selection.

Electronic Resources

The Library offers access to a wide variety of databases for your research and clinical information needs. Connect to PubMed and other frequently used tools under the Top Databases label on the left side of the Library's website. Access other databases through E-Resources. Most databases, unless labeled "Free," must be accessed from within WCMC or via EZproxy (see Remote Access section below).

E-books

Over 12,000 titles, including the *Current Protocols* series, *Current Medical Diagnosis and Treatment* and *Harrison's*. Search for e-books by limiting to e-books in the search toolbar.

E-Journals

Over 9,500 titles. Link to these journals from Tri-Cat or the e-Journals link from our website.

Popular databases

PubMed – premier clinical literature database; links to a host of biomolecular resources from NCBI.

Remote Library Access

EZproxy is a service that allows Weill Cornell's current faculty, students, staff and NewYork-Presbyterian/Weill Cornell's residents and fellows to remotely access the library's subscribed (paid) electronic content such as e-journals, e-books, and other e-resources while off-campus.

For more information, visit

<https://library.weill.cornell.edu/about-us/remote-access-to-library-resources>

GET IT button

Click on the GET IT button in many of our databases to connect to full text, see our print holdings, or request an interlibrary-loan.

Bibliographic management tools

EndNote Web and RefWorks, both web-based products, are free of charge for all members of the WCMC community; users must be inside the network to activate their account. EndNote is a client-based application and must be purchased by the individual user.

Neighboring Libraries

As registered users of Weill Cornell Medical Library, you also have courtesy privileges at the Hospital for Special Surgery (HSS), Memorial Sloan-Kettering Cancer Center (MSKCC), and Rockefeller University (RUL) libraries. Information about hours and access is available at the Weill Cornell Medical College Library Circulation Desk. You can also call or visit each library for further information.

Hospital for Special Surgery Library

541 East 70th St 8th Floor Main Building

<http://www.hss.edu/Professionals/Academic-Training/The-Kim-Barrett-Memorial-Library/>

Information 212- 606-1210 or via email at medlib@hss.edu

Memorial Sloan Kettering Cancer Center Library

430 East 67th St

<http://library.mskcc.org>

Information 212-639-7443

Rockefeller University Library

1230 York Avenue

Welch Hall, 1st floor

STUDENT LIFE

Life in New York City

New York is one of the world's great cities. The Upper East Side of Manhattan is a comfortable, convenient and generally safe residential neighborhood. Students have easy access to an unparalleled range of cultural and recreational activities including art, music, theater, cinema, sports, and dining. Most of these activities are within walking distance or easily reached by public transportation. As a result, few students require an automobile. All students are to assume full responsibility for housing, meals, telephone service, transportation, parking facilities, books, equipment, and other living expenses.

The graduate school hosts a number of student clubs and initiatives that members from the Weill Cornell community are encouraged to join. See <https://gradschool.weill.cornell.edu/student-experience/student-clubs-and-initiatives> for details.

Housing Policy

At this point in time the MBIO Program is unable to guarantee housing for students. This is due to the limited nature of housing for all students of Weill Cornell. Every effort is made to secure on-campus housing for interested students.

Students interested in obtaining Cornell Housing must submit a request by emailing the MBIO Program Director, not the Housing Office. For incoming students, housing applications will be accepted until June 15th, at which time the final prioritization will be determined. Incoming students are prioritized for housing based upon the distance they will travel to come to the Program using the address on the WebAdmit application. After any initial housing placements have been completed, applications will be prioritized based upon the order in which they are received.

Religious Institutions

The following is a list of some places of worship within walking distance:

CATHOLIC

St. Catherine of Sienna, 69th Street, btw. First and York Avenues
St. Jean Baptiste, Lexington Avenue btw. 75th and 76th Streets.
St. Vincent Ferrer, East 66th Street and Lexington Avenue
Cathedral of St. Patrick, 460 Madison Avenue (at 50th Street)
St. John the Evangelist Parish, 348 E. 55th Street, NY NY 10022

JEWISH

Shaaray Tefila (Reform), East 79th Street at Second Avenue
Park East Synagogue (Orthodox), East 67th Street between Third and Lexington Avenues
Central Synagogue, 123 East 55th Street
East 55th Conservative Synagogue, 308 East 55th Street

PROTESTANT

Bethany Memorial Reformed Church, East 67th St. and First Avenue
Epiphany Episcopal Church, East 74th Street and York Avenue
Jan Hus Presbyterian Church, East 74th Street between First and Second Avenues
Christ Church United Methodist, East 60th Street and Park Avenue
Trinity Baptist Church, East 61st Street at Second Avenue
Heritage Baptist Church, 8th Avenue at 36th Street
Holy Trinity Lutheran Church, 3 West 65th Street at Central Park West (Use 66th Street Crosstown Bus)

NON-DENOMINATIONAL

NewYork-Presbyterian Hospital Chapel (Cornell Campus)
Lobby of the 68th Street Entrance
Schedule of services posted at that location

Weill Cornell Medicine Directory

Students may search for faculty and staff contact information via the Weill Cornell Medicine directory, which is accessible online at <https://directory.weill.cornell.edu/>. If any difficulty is encountered in locating this information, students should contact the WCGS or MBIO Program for assistance.

EMERGENCIES, SAFETY, AND SECURITY

Reporting Crimes, Emergencies, and Suspicious Behavior

Incidents of crime and other serious emergencies which require immediate assistance and which occur on the Medical College campus should be reported to the New York City Police Department (“NYPD”) by dialing 911 and NewYork-Presbyterian Hospital Security (“NYPH Security”) at 1-212-746-0911. Reports may be made on a confidential basis.

An operator will ask you some routine questions such as your name, address, call-back number, and the nature of the incident you are reporting. Do not hang up until the operator tells you they have all the essential information. Information you can provide may be crucial to the safety of everyone involved in the call. If you believe you are in a hazardous situation and cannot remain on the call long, tell the operator this at the beginning of your call. The operator can then request the minimum information needed to get you help, and you can get to a safe place. The operator will need to know where you are and what happened so the appropriate help can be sent quickly. As difficult as it can be in an emergency, try to remain calm. It can be difficult to understand what a caller is saying for a variety of reasons, including language barriers and bad telephone connections. Strong emotions make effective communication even harder.

Additionally, students should report any crimes or other security concerns involving the Medical College and its students that occur off campus to NYPH Security. Such information assists the Medical College with reporting and notification requirements that help ensure the safety of the Medical College community.

Additional Emergency Contacts

Medical College		
Engineering & Maintenance (facilities emergencies)	(1-212-74)6-2288	
Emergency repairs in campus housing	(1-212-74)6-1001	Monday-Friday, 9AM-5PM
	(1-212-74)6-1009	other times
Environmental Health & Safety (fire, chemical, biological, and radiological releases)	1-646-WMC-SAFE (962-7233)	any time
NewYork-Presbyterian Hospital-New York Weill Cornell Campus		
Security	(1-212-74)6-0911	any time
Fire	(1-212-74)6-FIRE (3473)	any time
Facilities Operations(facilities emergencies)	(1-212-74)6-1920	
Environmental Health & Safety	(646) 962-7233	
Rape crisis program (emergency department)	(1-212-74)6-5050	
Counseling (social work)	(1-212-74)6-4320	
Switchboard	(1-212-74)6-5454	any time
Administrator On Call	(1-212-74)6-5020	any time

WCGS Leadership and Administrators

Students may also contact these administrators to share any personal concerns:

Assistant Dean (Student Affairs) WCGS Judith Cukor Ph.D.	(1-212-82) 1-0627 juc2010@med.cornell.edu
Associate Dean (Academic Affairs) WCGS Randi B. Silver, Ph.D.	(1-212-74) 6-5006 rbsilve@med.cornell.edu
Associate Dean (Program Development) WCGS David Eliezar, Ph.D.	(1-212-74) 6-6557 Dae2005@med.cornell.edu
Director of Education Administration Karla Jacome, M.S.Ed.	(1-212-74) 6-4708 kjjacome@med.cornell.edu
Assistant Dean (Access, Belonging & Student Success) WCGS Yazmin Carrasco, Ph.D.	yyc4001@med.cornell.edu
Assistant Director (Access, Belonging & Student Success) Roxana Mesias, Ph.D.	rem4008@med.cornell.edu
Director (Enrollment & Educational Programs) WCGS Heather DiTullio, MS	(1-212-74) 6-6981 had4003@med.cornell.edu
Student Services Administrator Clive Liew	cli4002@med.cornell.edu

All students should be familiar with the web site: <https://emergency.weill.cornell.edu>. A link to this site is included as an app on all WCMC tagged phones, computers and iPads. It contains quick, easy-to-find, easy-to-read links to medical college policies and resources for mental health, medical health, sexual assault, weather emergencies, etc.

Emergency Alerting

Emergency alerts are posted to the emergency information web site at <https://emergency.weill.cornell.edu>, and may also be heard by calling 1-212-746-WCMC (9262).

Response guides for specific types of emergencies are available at the Emergency Information web site. In an emergency, the Medical College will notify students using the Emergency Notification System (ENS). The ENS can send simultaneous notifications to all students or select groups via email, cell phone, and text messaging.

All students are responsible for ensuring their contact information is accurate in the ENS. Further information and instructions to update contact information are at: <https://emergency.weill.cornell.edu/UpdateWCA>
Persons may also receive emergency alerts from New York City by registering for Notify NYC at <http://nyc.gov/notifynyc>

Suspicious Behavior

Students should report suspicious behavior to the NYPD and NYPH Security. It is important to remember that behavior, not a person, is suspicious. Signs of behavior that might be suspicious are:

- A person running and looking about furtively, as if they were being watched or chased.
- A stranger carrying property at an unusual hour or location, especially if the items are computer equipment, office machinery, or a locked bicycle.

- A person going door-to-door in an office or residential building.
- Any person forcibly entering a locked vehicle or building.
- Transactions being conducted from vehicles, especially near schools or parks.
- A person or persons sitting in a parked car and closely scanning the area.
- A person exhibiting unusual mental or physical symptoms.
- Unusual noises, including gunshots, screaming, sounds of fighting, barking dogs, or anything suggesting danger or illegal activity.

Students should report suspiciously behaving persons without proper identification in Medical School facilities to NYPH Security.

Crime Prevention Tips

- Keep yourself, your residence, your office, and your car safe by incorporating safe behavior into your daily routine.
- When you leave your room or office, even for a moment, always keep your doors and windows locked.
- Never leave your purse, wallet, book bag, notebook computer, or other property unattended, even for a moment.
- Be careful when people stop you for directions or money. Always reply from a distance; never get too close to the car or the person. If you feel uncomfortable about someone near you, go somewhere with people around and call the police or NYPH Security.
- If you are out after dark, use only well-lit routes and travel in groups when possible. Avoid construction areas, particularly sidewalks shadowed by scaffolding.
- Walk with the appearance of confidence. Make eye contact with passersby, and keep a firm grip on your property.
- Have keys ready so you can quickly get into your car or home.
- Although it seems courteous to open doors for others, especially persons carrying groceries or packages, do not open doors for strangers.

Campus Security Report

In addition to the information contained above, The Medical College and Graduate School of Medical Sciences annually distribute a campus security report to all students and employees containing descriptions of policies and procedures for reporting crimes and emergencies and campus crime data. The report lists telephone numbers and contact information for security in campus facilities and residences. Policies and procedures for handling sex offenses and programs for *victims* are also described. The 2021 report is available on the WCGS website

<https://medicaleducation.weill.cornell.edu/student-resources/sexual-misconduct-campus-security>

The report contains information about all Weill Cornell Medicine residential and non-residential building used by all students.

Campus crime statistics can be accessed at <https://ope.ed.gov/campussafety>. The Advisory Committee on Campus Security will also provide upon request all campus crime statistics as reported to the United States Department of Education.

The Advisory Committee on Campus Security may be reached by e-mail at CampusSecurity@med.cornell.edu.

Fire Safety

Fire safety includes fire alarm activation response, fire emergency response, emergency evacuation, and fire prevention. The Medical College develops guidelines and procedures addressing these topics, periodically reviews and updates procedures related to fire safety, develops training programs and exercises to increase awareness amongst faculty, students and staff, and collects data on the effectiveness of the various fire safety program components.

Most areas in Medical College buildings are monitored by an early warning fire detection system and protected by

fire sprinklers. Upon the activation of any fire sprinkler or fire detection or alarm-initiating device, there is an audible and visual indication throughout the building that the fire alarm has activated, while simultaneously notifying the NYC Fire Department of the potential fire emergency. Students must respond to all fire alarm activations and assume that each activation is a real fire emergency. Ignoring a fire alarm activation is against Medical College and NYC guidelines governing fire alarm activation response.

Every student is responsible for following guidelines governing Fire Prevention including controlling the accumulation of trash and other combustibles, complying with the Medical College “No Smoking” policy; following guidelines prohibiting the use of unapproved open flames such as candles, canned cooking fuels, and propane gas; and using caution when heating and cooking food such as using microwaves and toasters.

Fire Safety Rules

Students must follow all Medical College requirements and guidelines related to fire safety and fire prevention. Students may access this information on the Environmental Health & Safety website at: <https://ehs.weill.cornell.edu/>

Specific fire safety topics may be found in the Fire Safety Manual: <https://ehs.weill.cornell.edu/system/files/fire.pdf>

During fire and other emergencies, fire alarm activations, and fire drills, all students must follow instructions of Medical College employees.

Residential Fire Safety Plans

Students should be familiar with their Residential Fire Safety Plan specific to their building. Residential Fire Safety Plans are distributed to all incoming students living in Medical College residential buildings. Plans are updated annually and re-distributed to residents during National Fire Prevention Week in November. Residential Fire Plans are also available on the EHS web site: <https://ehs.weill.cornell.edu/forms-resources>

Tampering with Fire Alarms and Malicious Alarm Activations

Tampering with fire safety equipment such as fire extinguishers, or fire protection system devices including smoke detectors and sprinkler heads is unlawful and subject to disciplinary action by the Medical College.

Transmission of a false fire alarm is punishable as a Class A Misdemeanor under New York State Penal Law § 240.50. Violators of this law will also be subject to disciplinary action by the Medical College.

Fire Safety Procedure

If you discover fire or visible smoke, immediately:

- Follow R.A.C.E. procedure:
 - R – Remove yourself from the affected area and provide assistance to others requiring it.
 - A – Activate the fire alarm by pulling the red fire alarm manual pull station located next to each fire exit.
Shout “Code Red” to alert other occupants
 - C – Confine/contain smoke by closing doors as you leave the area
 - E – Evacuate using the safest/shortest route of travel to the fire exit
- All students should know the location of at least two fire exits on their floor and the shortest path of travel.
- Never use an elevator during a fire emergency.
- Once outside the building, move away from the building’s entrance to allow Fire Department responders to enter.
- Follow instructions of Environmental Health & Safety, Security, and Housing personnel.

Questions Direct questions concerning fire safety to Environmental Health & Safety. <https://ehs.weill.cornell.edu/>